

Field Boundary Exercise Using Site Mate

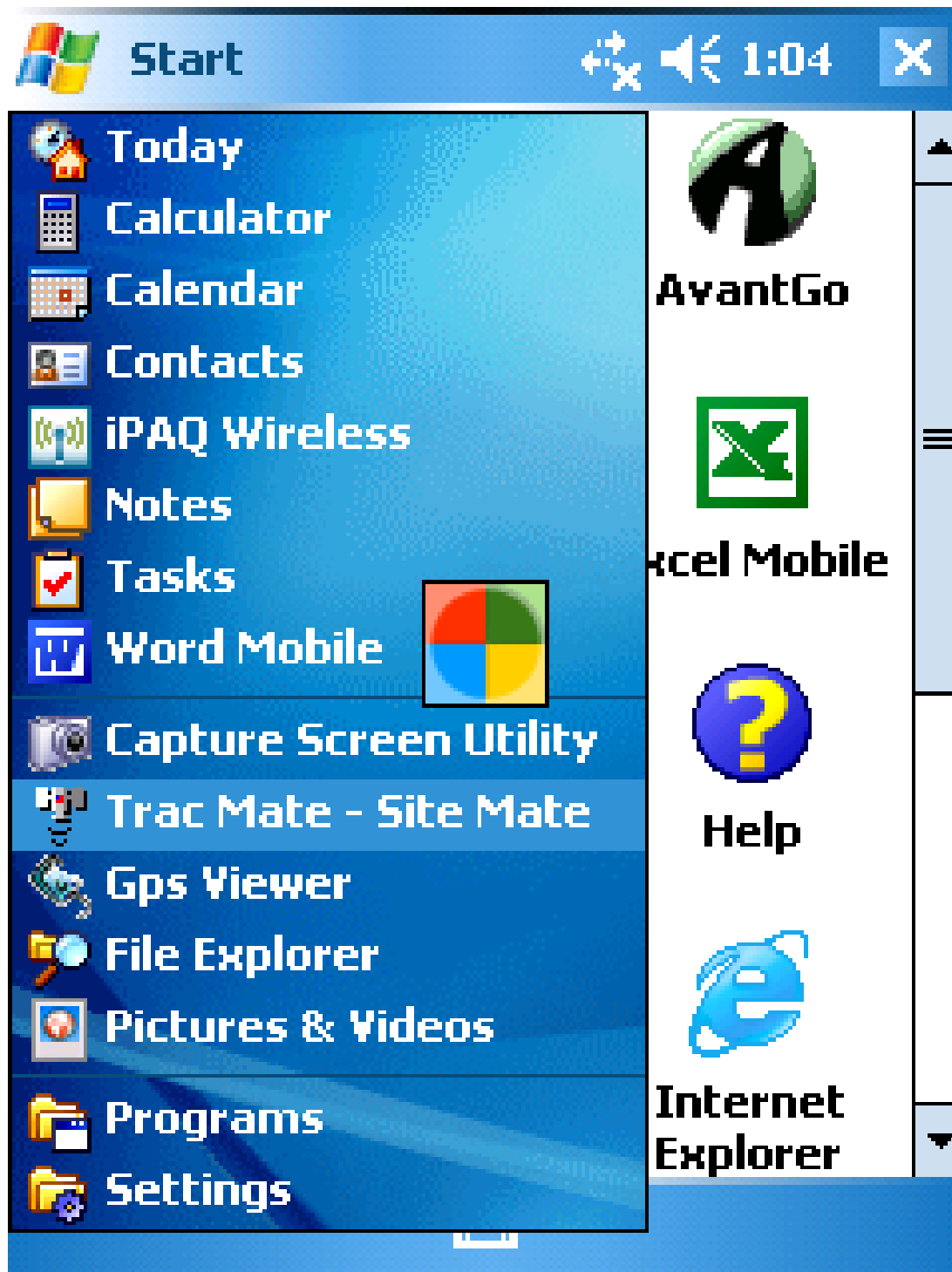
Precision Cotton Workshop
November 13, 2008

Amy Thompson Winstead
Regional Extension Agent, Precision Agriculture
Alabama Cooperative Extension System

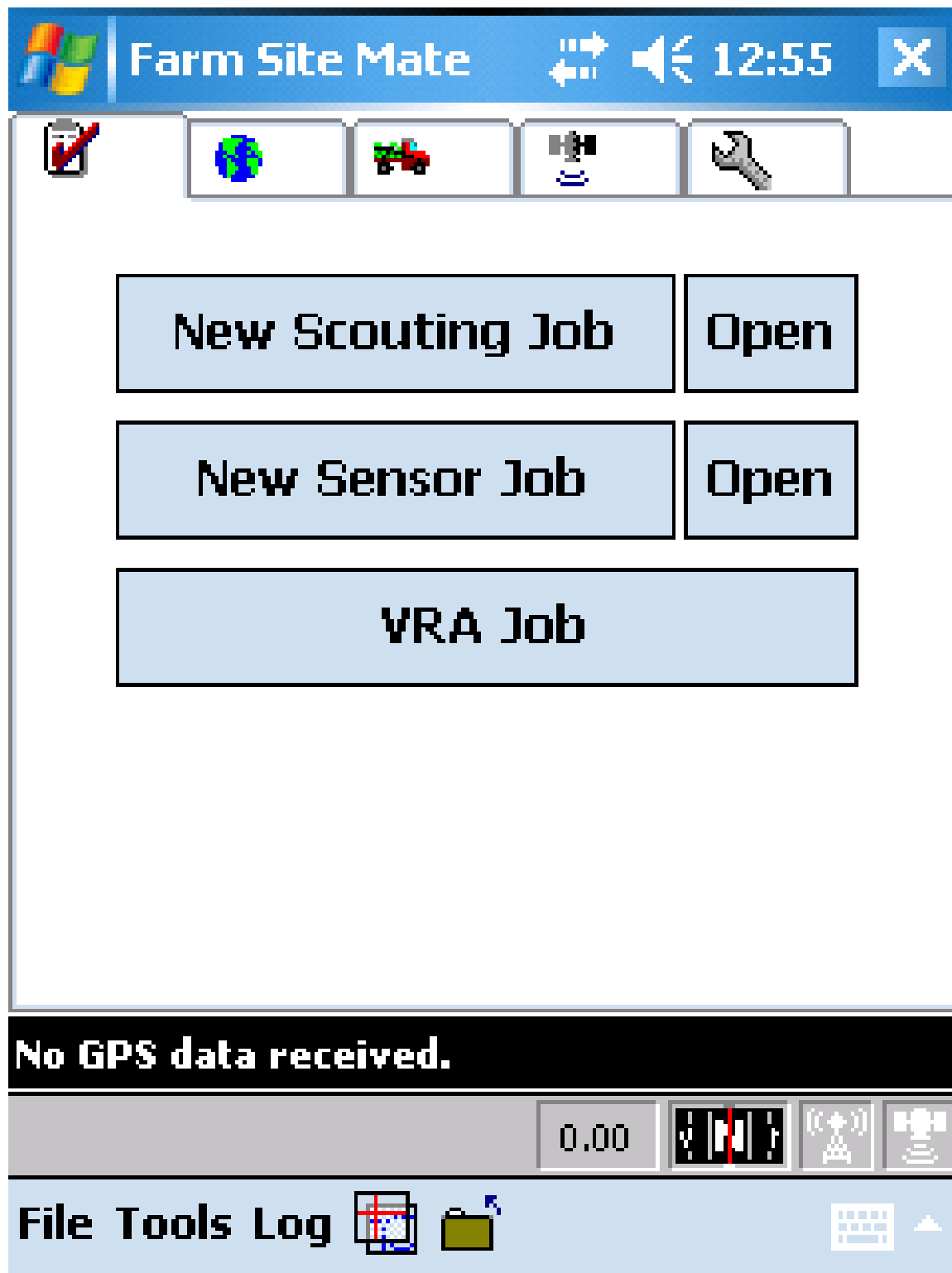


*Alabama A&M and
Auburn Universities*

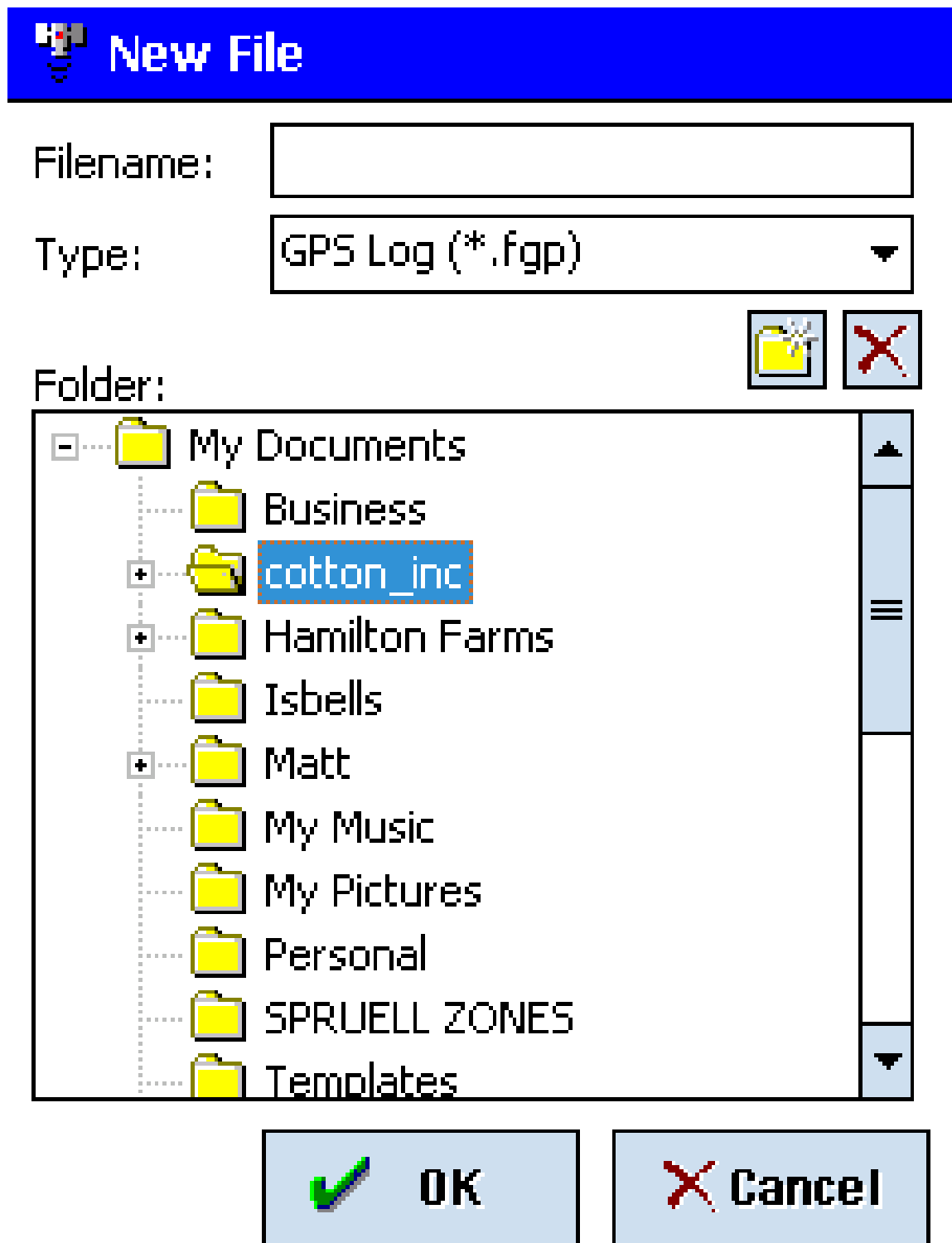




1. Open Site Mate by clicking on the iPAQ's Start button and selecting Trac Mate - Site Mate from the drop down menu. (You can also select 'Programs' from the Start Menu and then select Trac Mate - Site Mate).





2. From the main page, select
New Scouting Job



3. Under Folder open 'My Documents' by selecting the '+' sign on the left hand side. Select the folder labeled Cotton_inc.

Filename:

tunica_bndy	OK	X
-------------	----	---

a	b	c	d	e	f
g	h	i	j	k	l
m	n	o	p	q	r
s	t	u	v	w	x
y	z	1	2	3	4
5	6	7	8	9	0
áü	!@#	123	 Shift	Spc	 Bksp

4. Once the cotton_inc folder is highlighted, select the box next to Filename and using the pop-up alphabet name your boundary 'tunica_bndy' (the underscore is found by selecting the symbols icon at the bottom of the alphabet page). Click **OK** when finished.



Template

Template

<Blank Template>
<No Attributes>

New

Edit

Delete

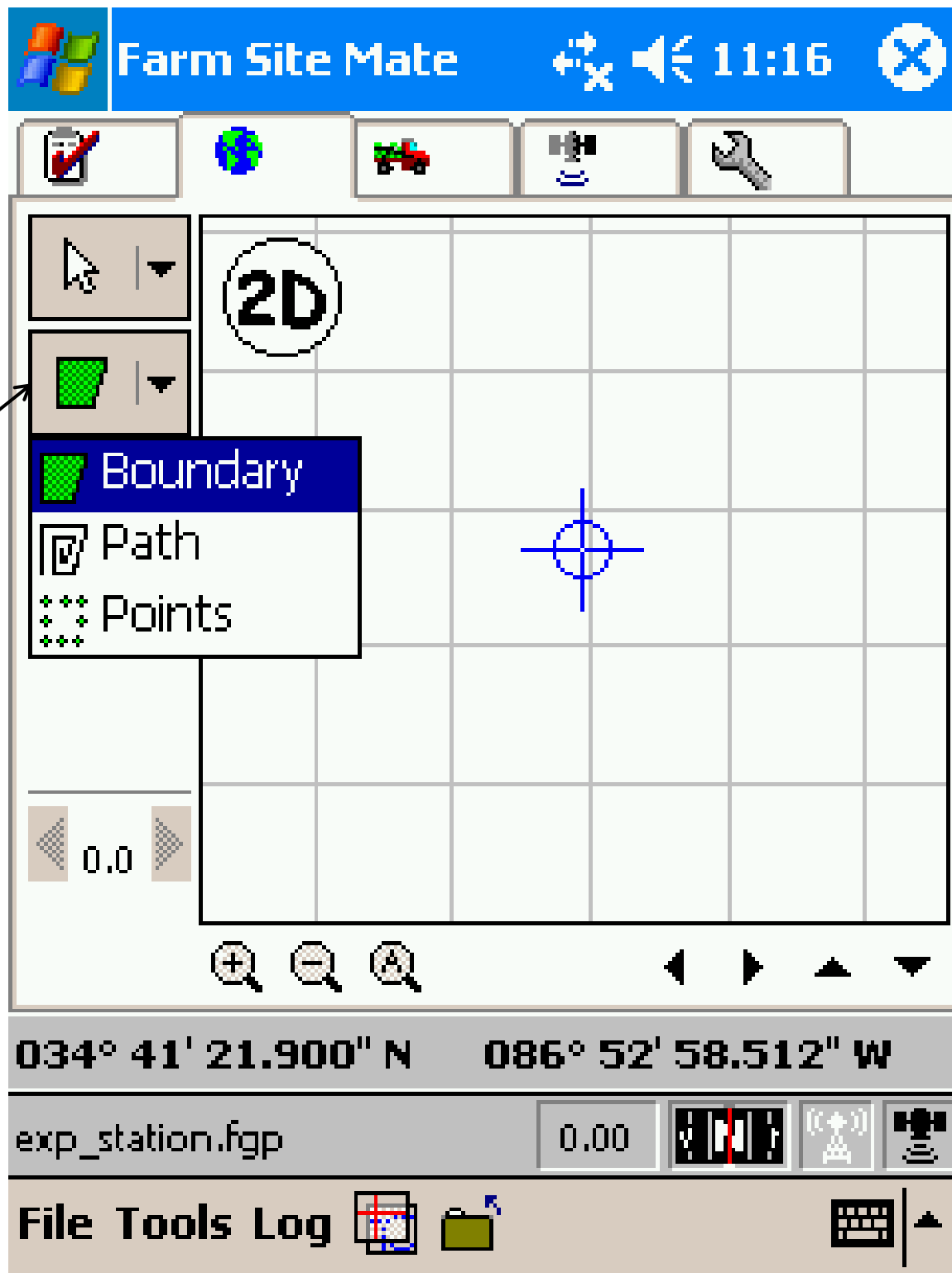


OK

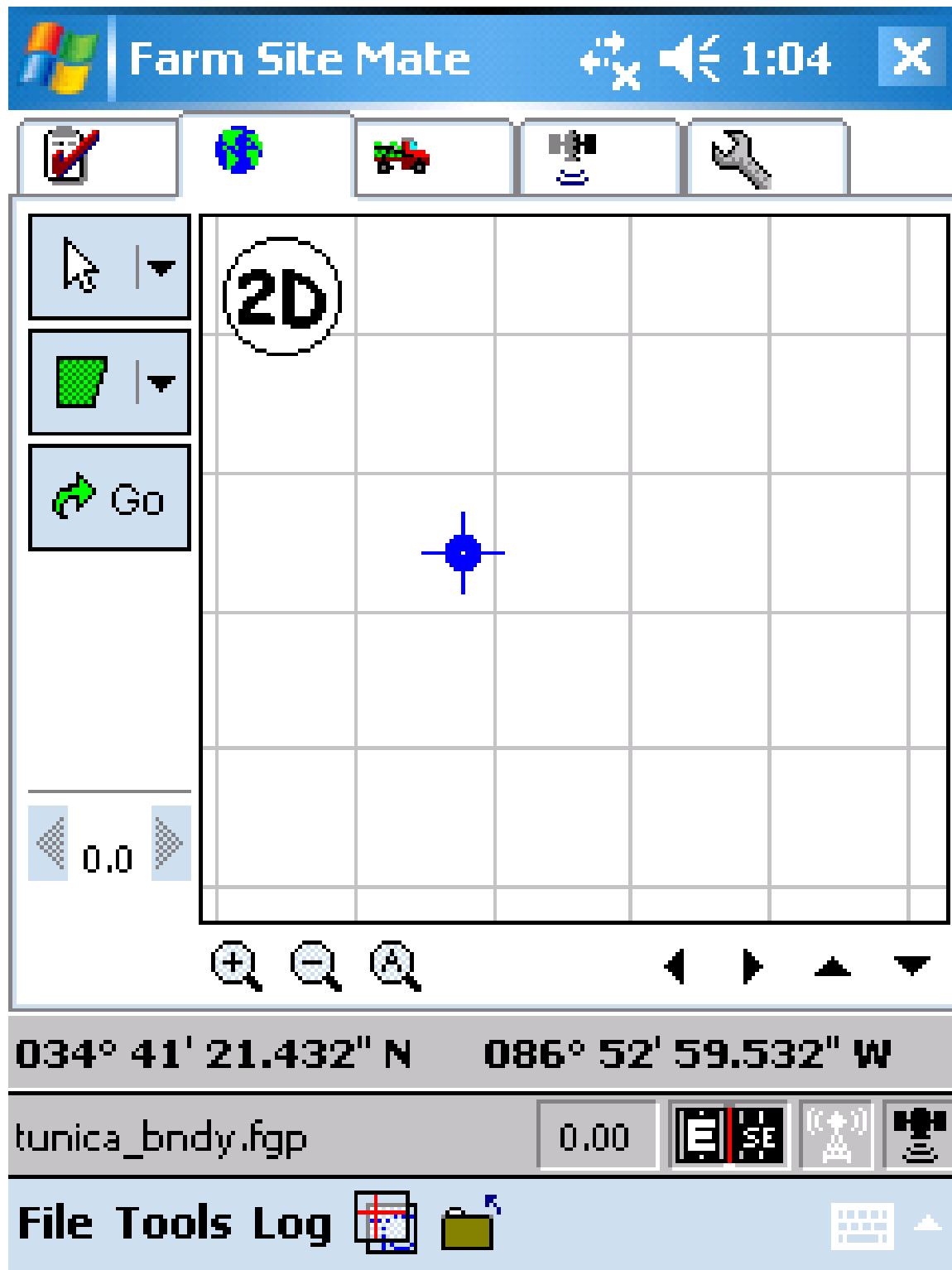


Cancel

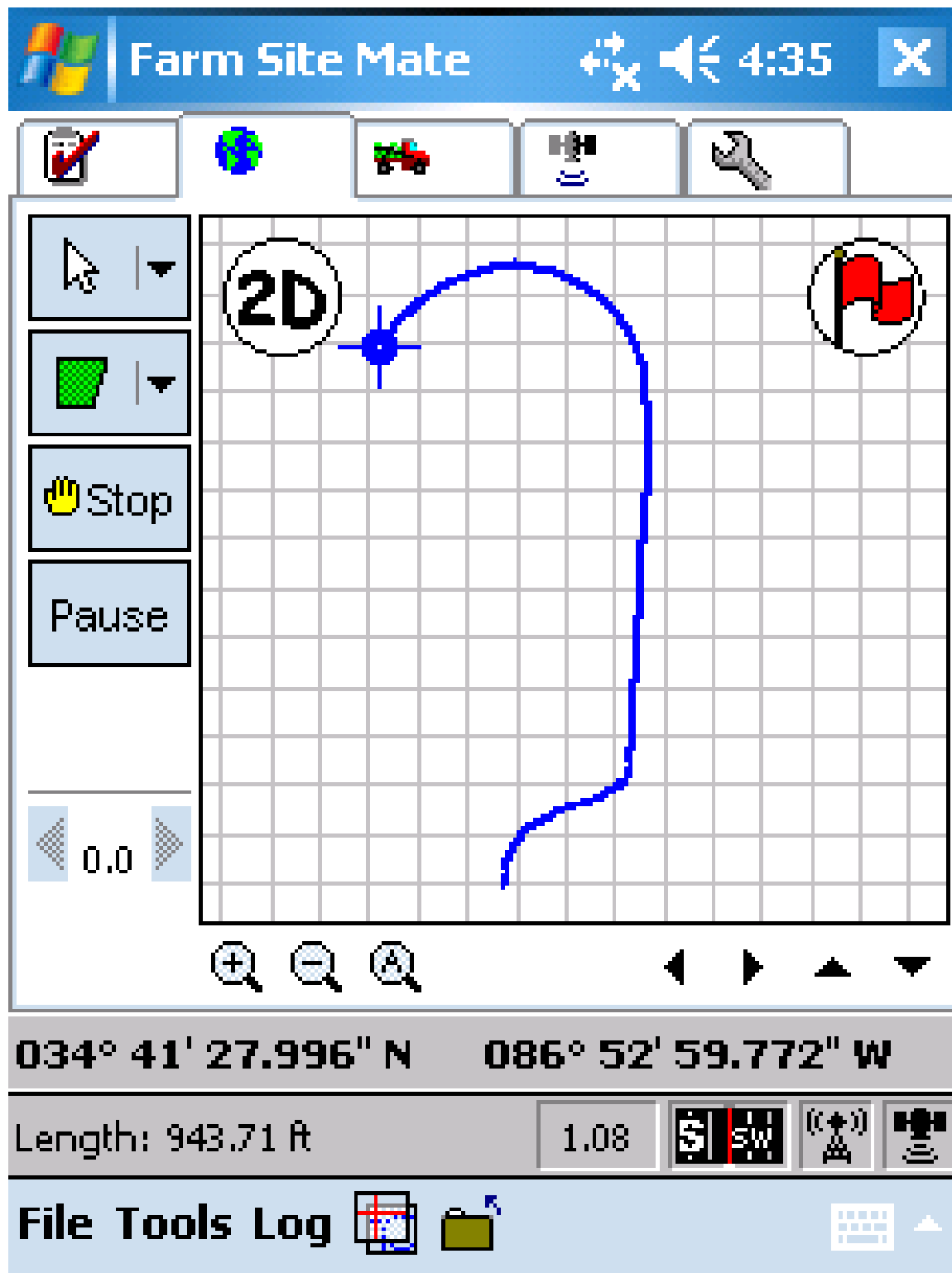
5. Click **OK** on the Template page



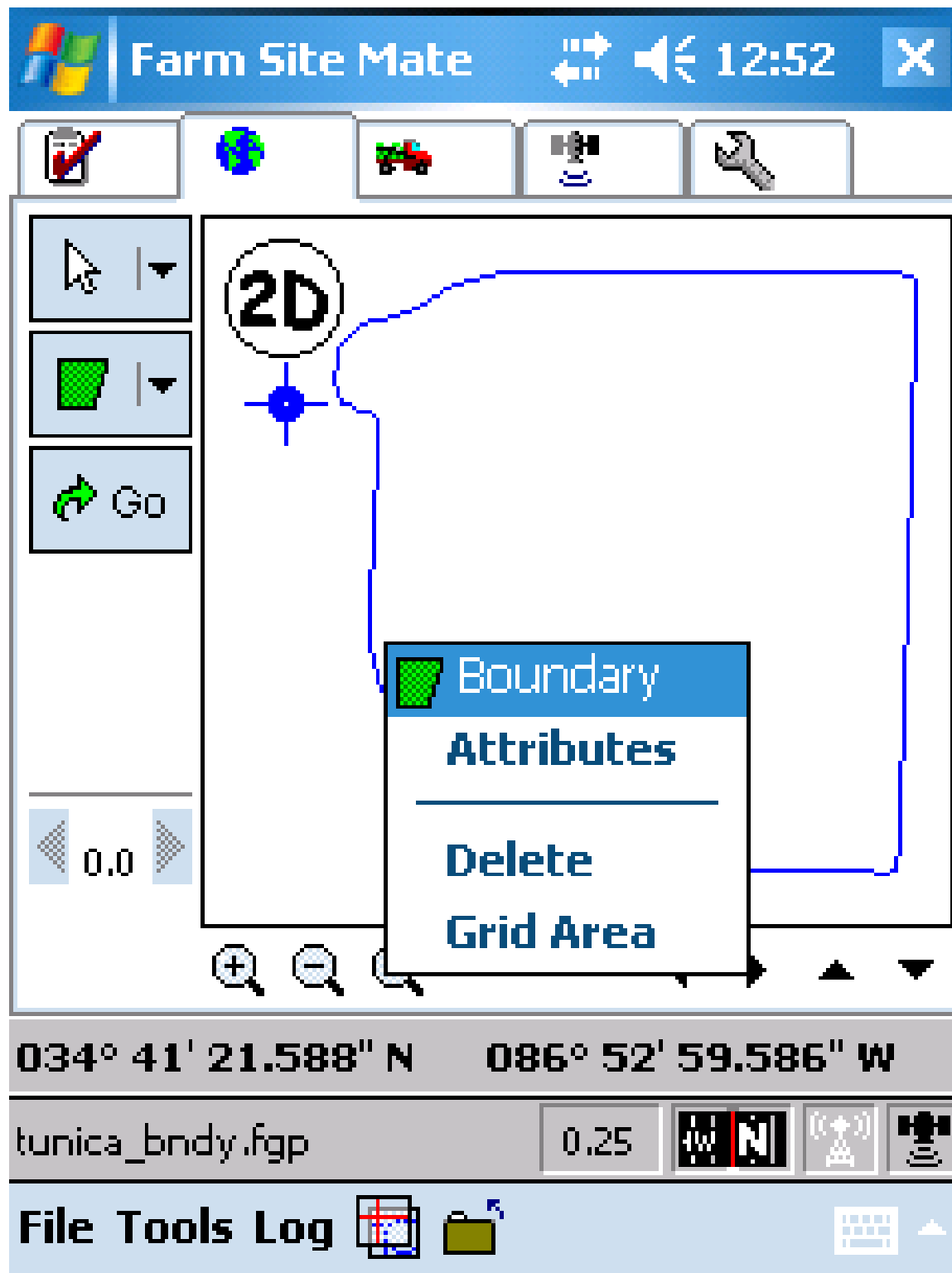
6. You are now on the scouting job page. Select the boundary tool from the drop down left hand menu (middle icon).



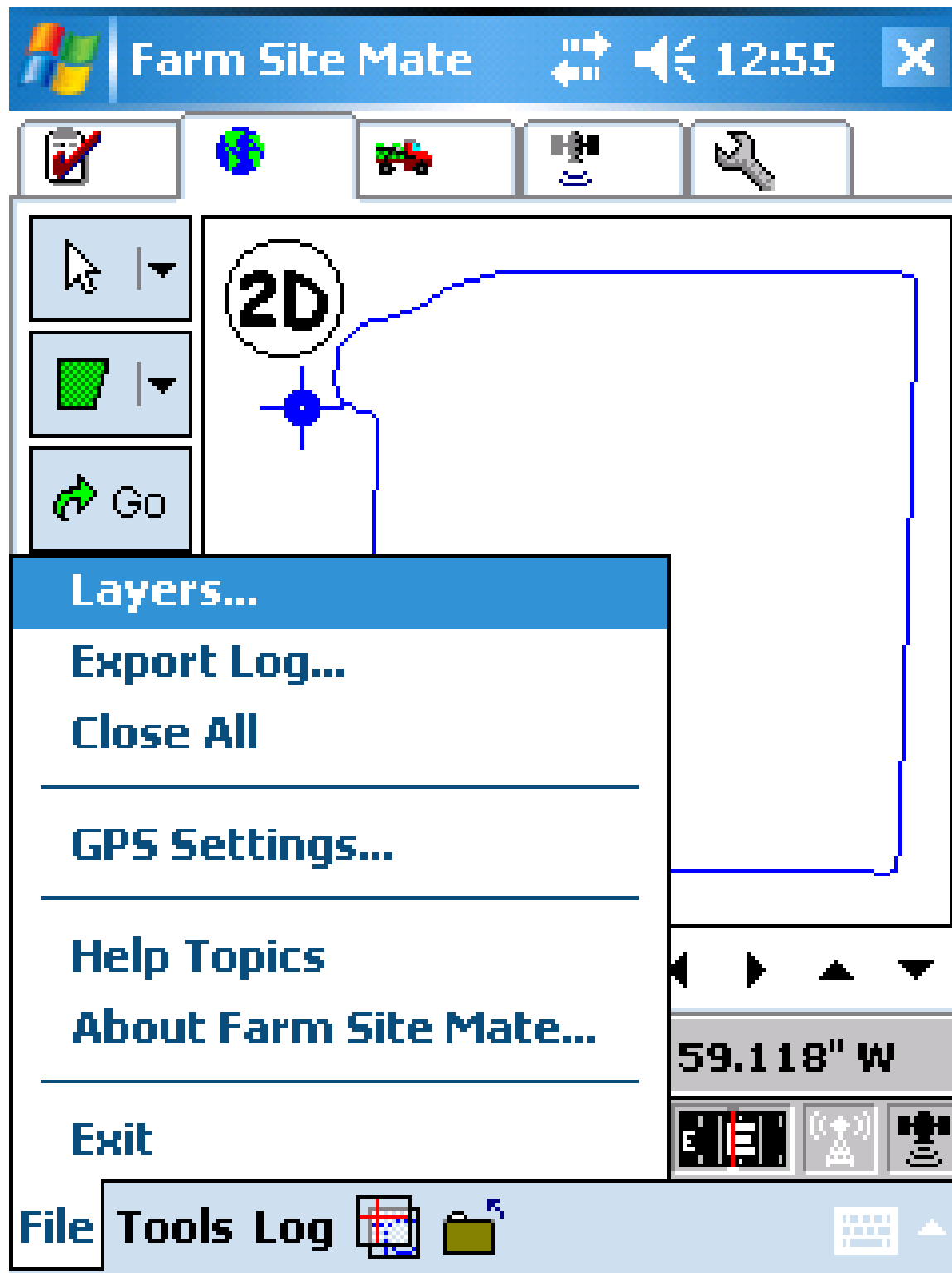
7. From the location where you want to begin recording select '**GO**' to start the boundary. Begin to move and define the area's boundaries. The page now displays a Stop button.



8. As you travel you will see your path outlined on the screen. (If you don't see your boundary being created, select the log tab at the bottom of the screen and make sure 'Automatic' is selected). Select the "Stop" button when you have completed the boundary.



9. Hold your stylus pen on the boundary until the boundary attributes box appears. Select 'Attributes' to see the area and perimeter covered by the boundary.



10. Select the File tab at the bottom of the page and select Close all.



Export Log File?

Do you wish to export this log?

Yes

No

In the future...

ALWAYS export the log file.

NEVER export the log file.

ASK each time a log is saved.



OK



Cancel

11. Select Yes to export the log file and keep Ask each time selected. Click **OK**.



Export File

Export File Types

Arcview Shape File (shp)

Mapinfo Interchange File (mif)

Farm Works GPL File (gpl)

\My Documents\cotton_inc ...



OK



Cancel

12. Select ArcView Shape File to Export and browse to save under \My Documents\cotton_inc. Click **OK**.



Export File

Arcview Shape File (.shp)

Points

Paths

Boundaries

Export as lines



OK



Cancel

13. Select to export as a Boundary and select Export as lines.