

NE

22.3 Acres

9

29.4 Acres

8 445

12

SE

7

11 449

10

22.3 Acres

4

Well

5 446

1

18.7 Acres

NW

6

2 450

3

SW

3 Behind Selph's. 42.65

	DATE	START	END	TOTAL HOURS	NOTES
Northwest section:	6/25/12	6:30 AM	7:00 PM	12.5	1975 GPM
	7/11/12	7:45 AM	4:15 PM	8.5	SMALL RAIN IN PM
	8/2/12	4:00PM	5:00AM	13	
Southwest section:	6/30/12	6:00 AM	7:00 PM	13	1975 GPM
	7/26/12	8:00 PM	7:45 AM	11.75	
	8/5/12	5:30PM	6:30AM	13	
Northeast section:	7/10/12	9:30 AM	12:00 AM	14.5	1900 GPM
	8/8/12	6:30 AM	11:30 PM	17	
Southeast section:	7/5/12	7:00 AM	8:00 PM	13	1900 GPM
	8/7/12	6;45 AM	2:00 AM	19.25	

PROs and CONs of WATERMARK:

PRO:

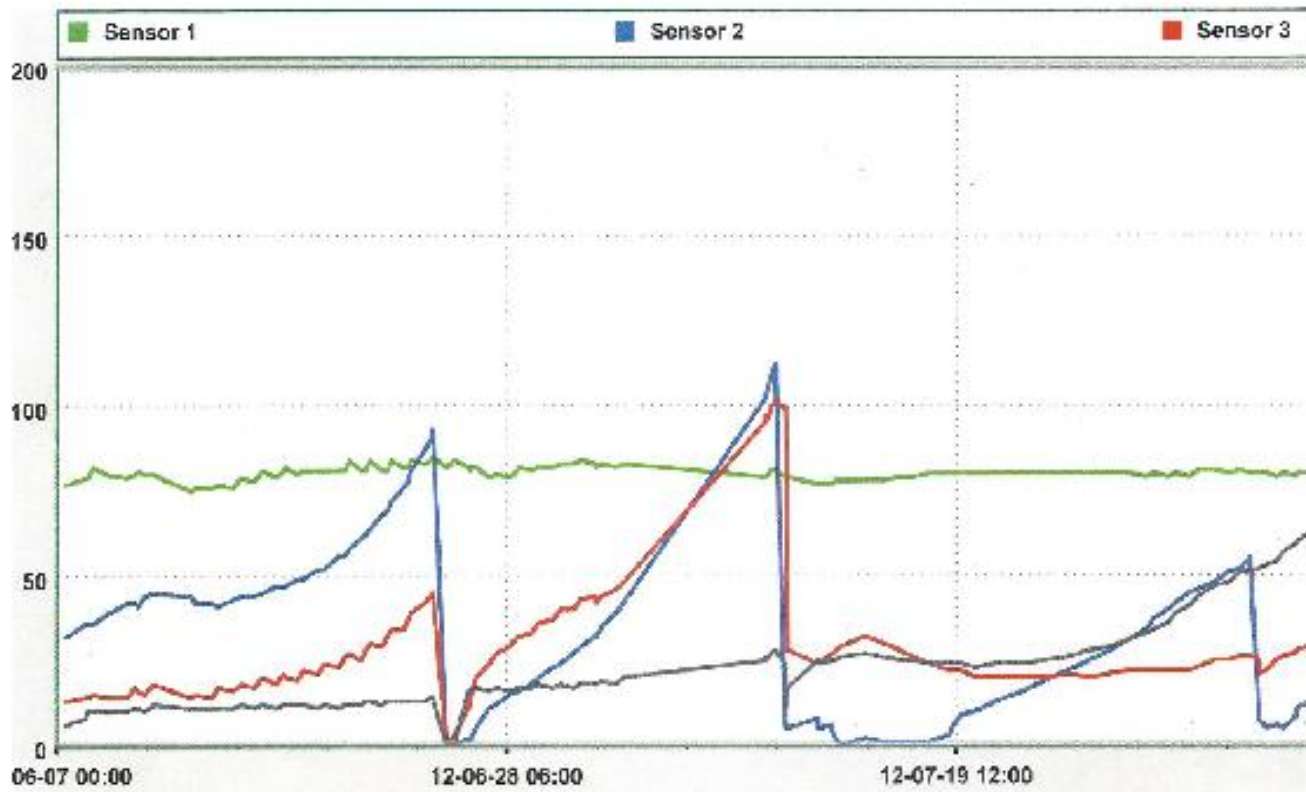
-web based so the results are quicker to get and your consultants are able to look at it remotely on their computer so you can talk while both looking at the same screen.

-A rain gauge is part of the system and can be looked at remotely

-A battery voltage meter is included so it is easier to troubleshoot if sensors are not responding

-You can put your computer cursor on the **line graph** at any point and the sensor will show you the moisture content and the date

-Instructional section to help you interpret the data



CON: These are not really con's, but things that would make the Watermark a little more user-friendly.

-Batteries would lose connection either from corrosion or moisture

-Screen would be easier to read if it was a little larger

PROs and CONs of DECAGON

PRO:

- Larger display and line graph is easier to read
- Computer cursor highlights details
- Makes and saves a report

CON:

- Not web based so has to be installed on your computer and then you have to download the information from a server
- Results can only be seen from the computer it is installed on. For a consultant to be able to access your information, the program also has to be installed on his or her computer.

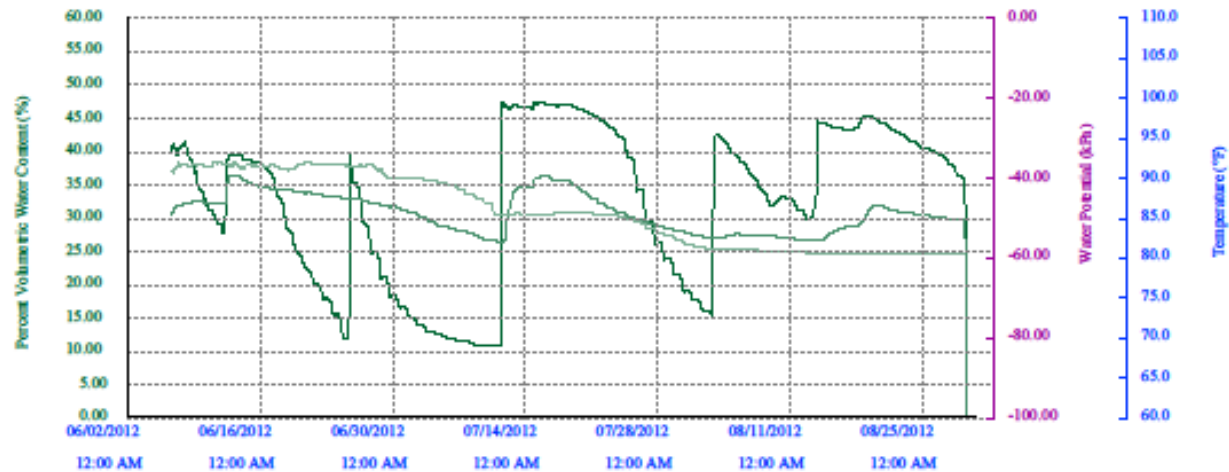
5G0B0446

Location: Bush - New Hope Farms 90°13'20.57" West, 33°39'25.27" North (New Devices)

Start: 06/01/2012 10:00 PM

Stop: 08/30/2012 12:00 PM

- P1 - EC-5 Soil Moisture: % VWC
- P2 - EC-5 Soil Moisture: % VWC
- P3 - EC-5 Soil Moisture: % VWC
- P4 - MPS-2 Water Potential/Temp: kPa Potential
- P5 - MPS-2 Water Potential/Temp: °F Temp
- P5 - MPS-2 Water Potential/Temp: °F Temp



	P1 - % VWC EC-5 Soil Moisture	P2 - % VWC EC-5 Soil Moisture	P3 - % VWC EC-5 Soil Moisture	P4 - kPa Potential MPS-2 Water Potential/Temp	P4 - °F Temp MPS-2 Water Potential/Ten
Avg:	32.0	30.3	31.0	-35.3	77.8
Min:	-18.8	-17.3	24.6	-1311.7	-40.0
Max:	47.4	36.5	38.7	-0.1	88.3
Total:	n/a	n/a	n/a	n/a	n/a
Events:	n/a	n/a	n/a	n/a	n/a