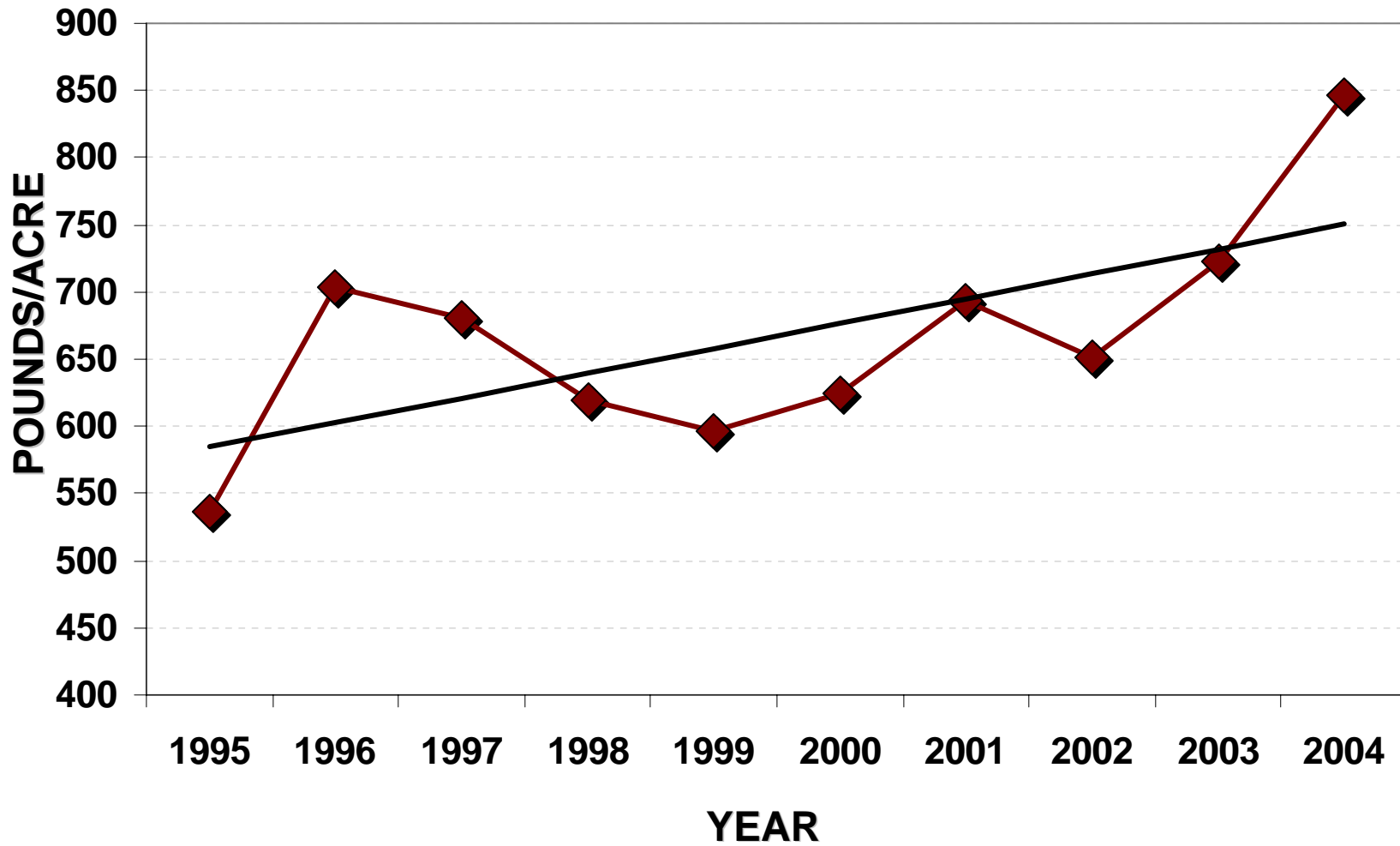


# **U.S. UPLAND COTTON QUALITY**

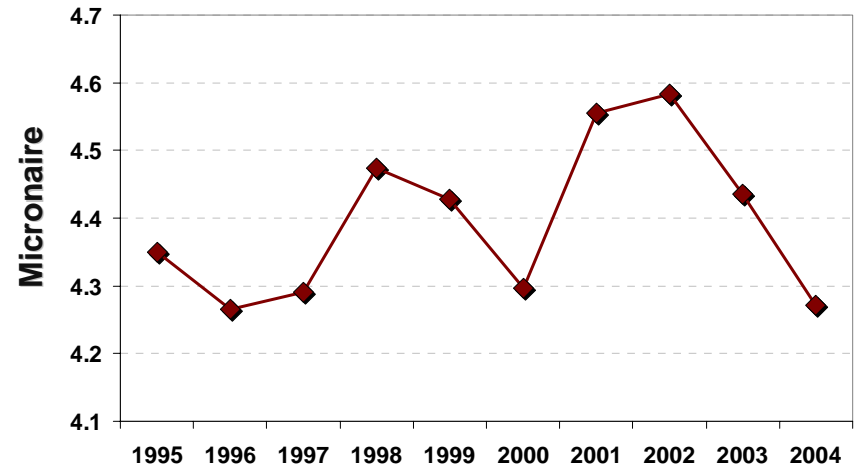
**2004-05 CROP  
FINAL**

# TEN-YEAR YIELD TREND U.S. UPLAND

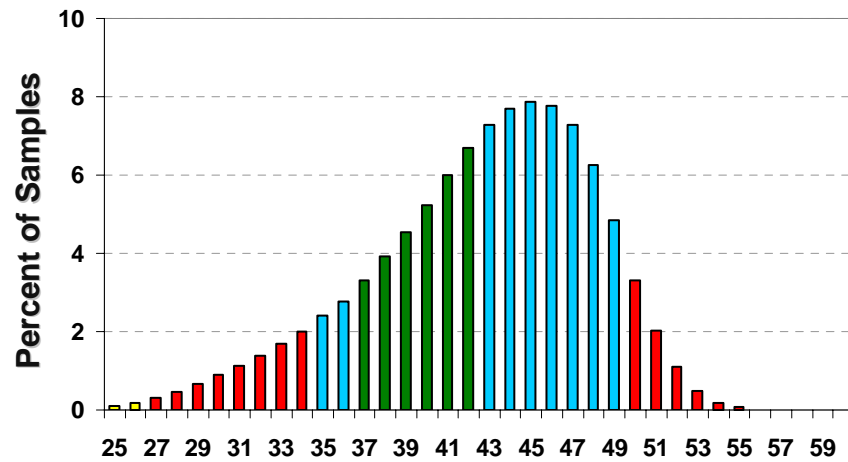


# U.S. Upland MICRONAIRE

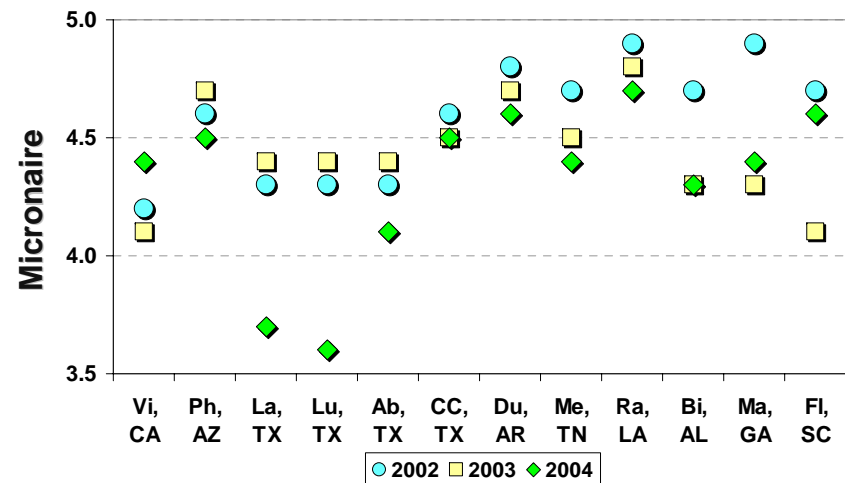
## TEN-YEAR TREND



## CROP DISTRIBUTION

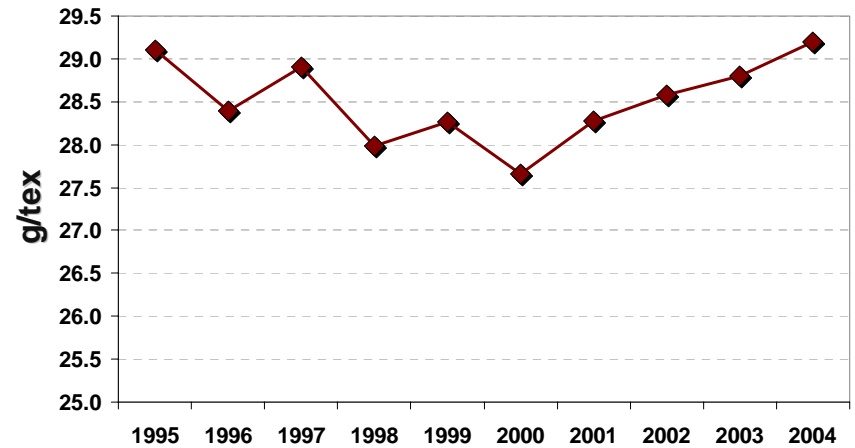


## AVERAGE BY CLASSING OFFICE

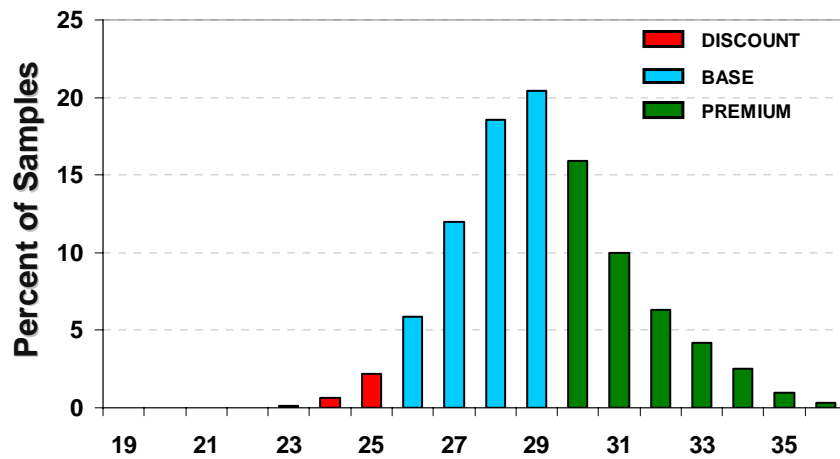


# U.S. Upland STRENGTH

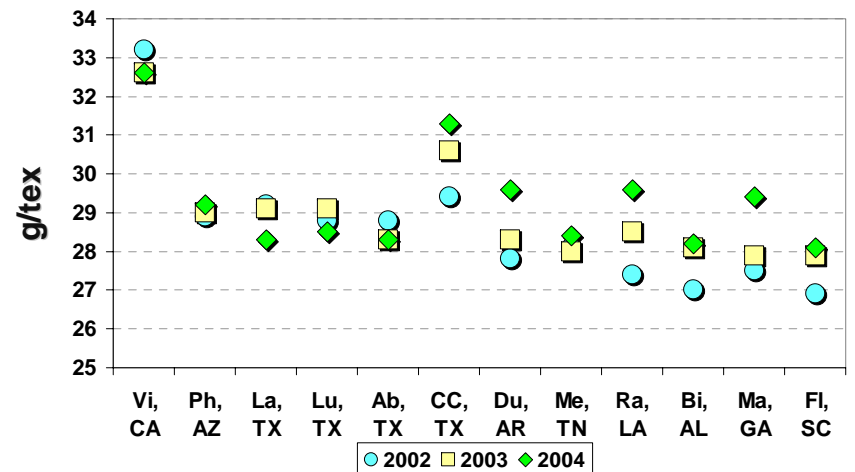
## TEN-YEAR TREND



## CROP DISTRIBUTION

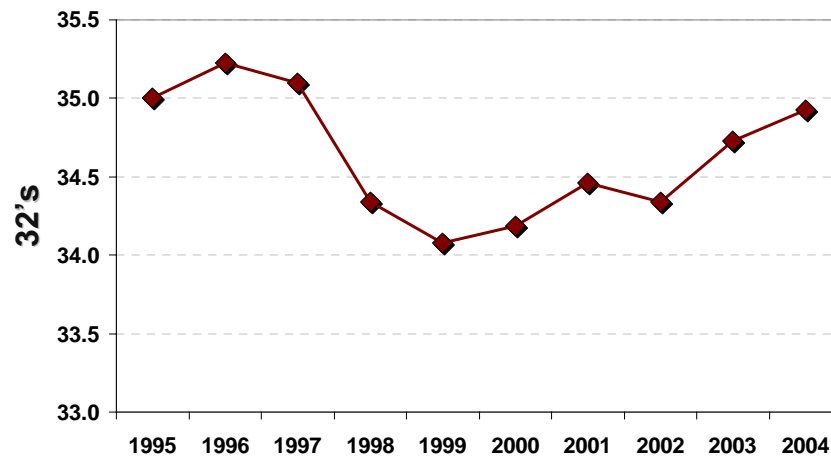


## AVERAGE BY CLASSING OFFICE

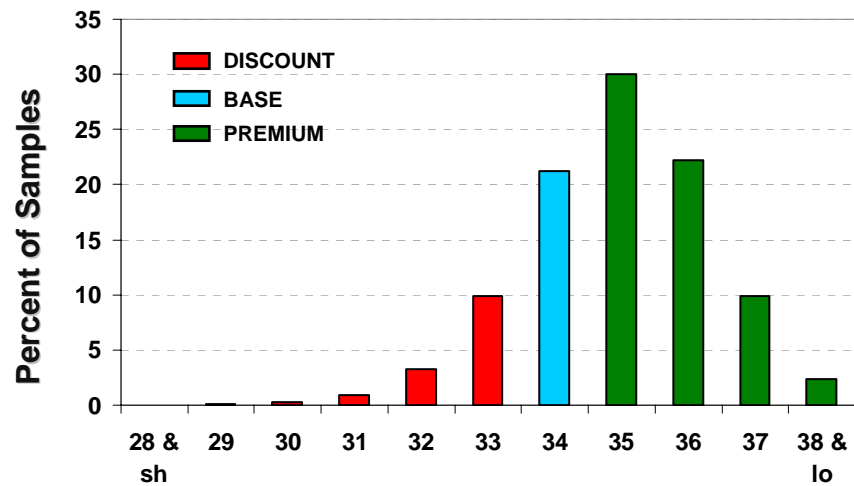


# U.S. Upland STAPLE LENGTH

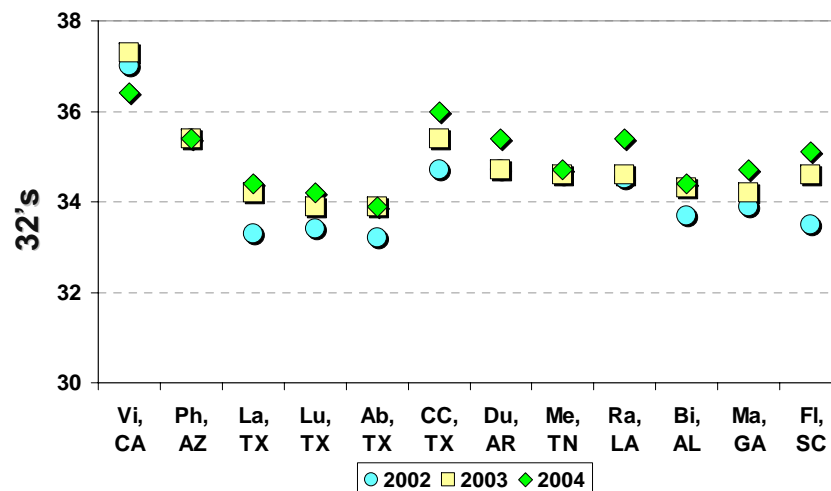
## TEN-YEAR TREND



## CROP DISTRIBUTION

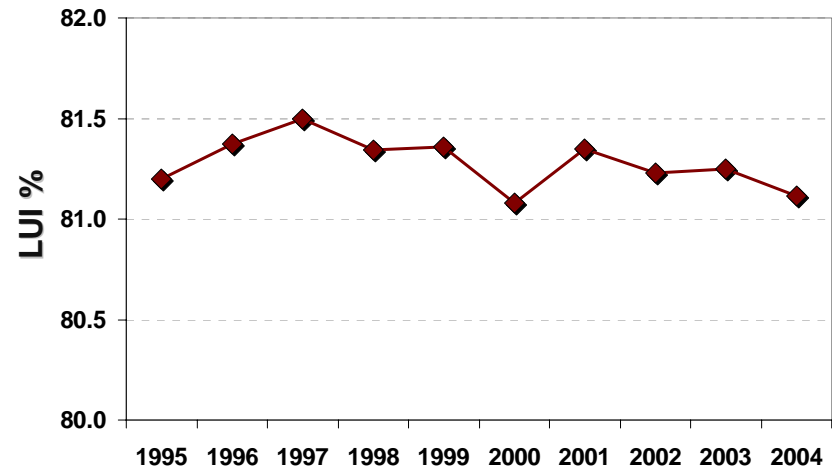


## AVERAGE BY CLASSING OFFICE

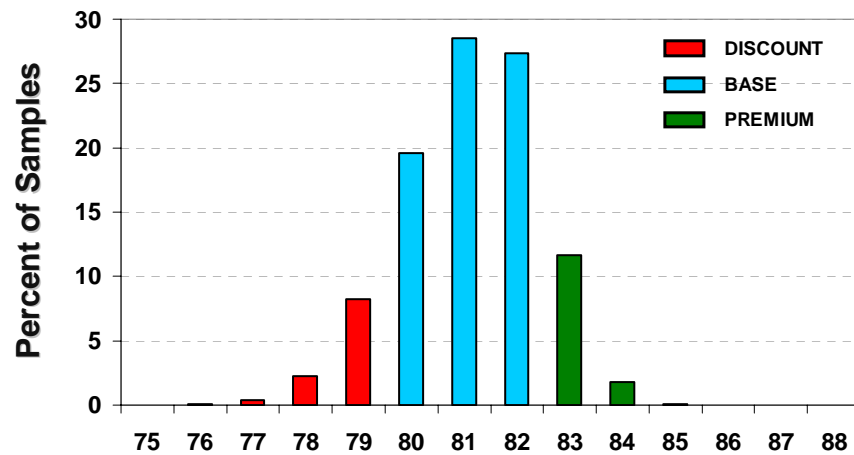


# U.S. Upland LENGTH UNIFORMITY INDEX

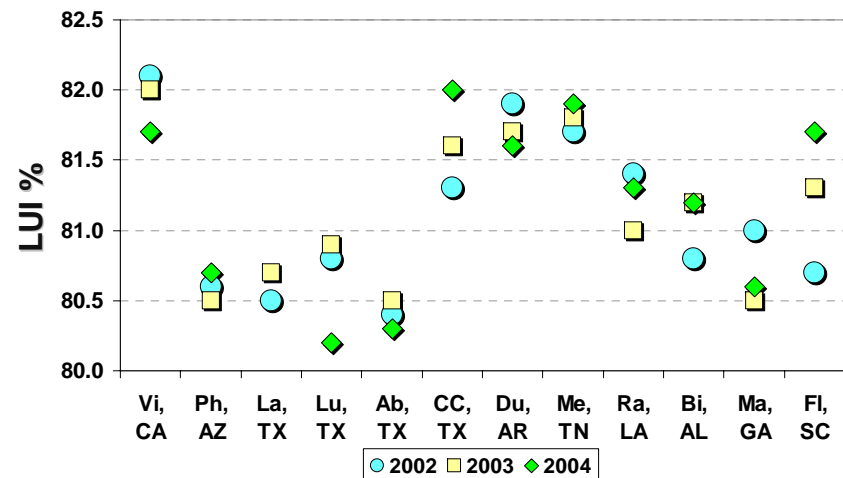
## TEN-YEAR TREND



## CROP DISTRIBUTION

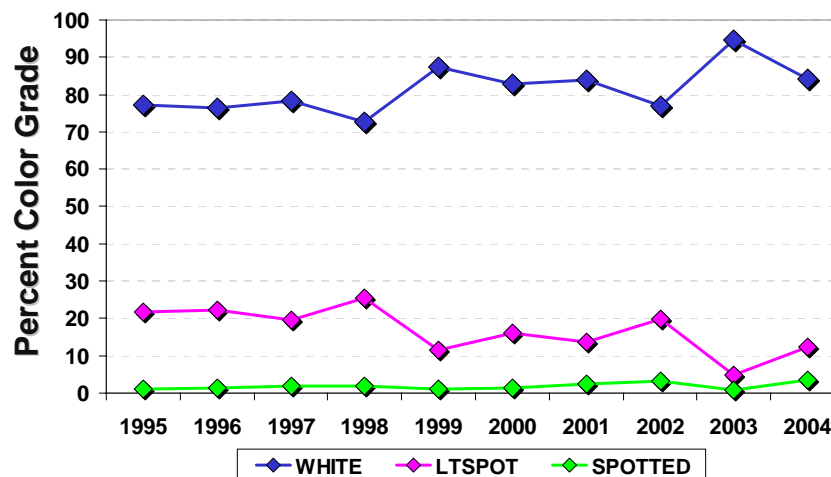


## AVERAGE BY CLASSING OFFICE

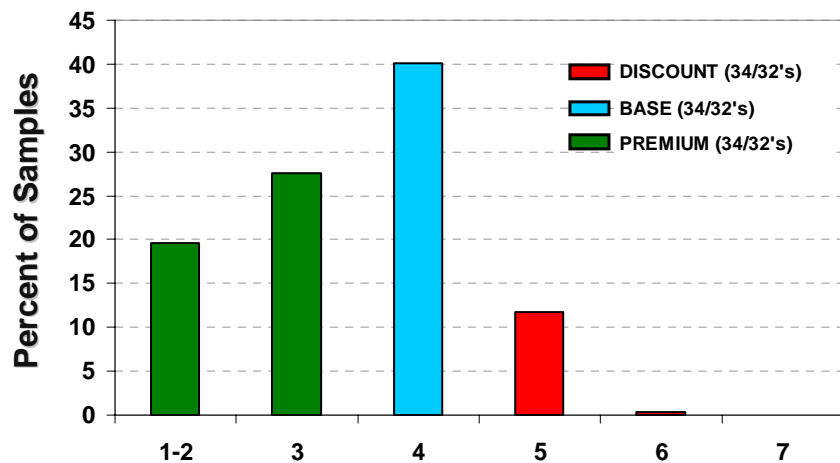


# U.S. Upland COLOR & LEAF GRADES

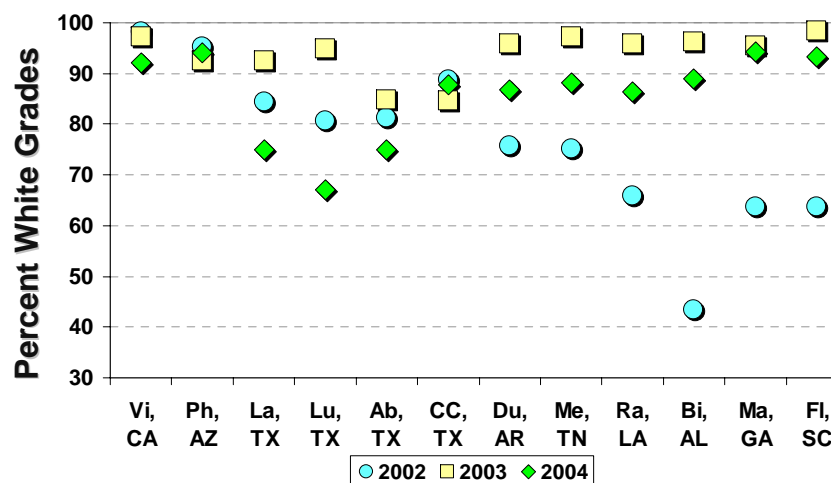
## TEN-YEAR COLOR GRADE TREND



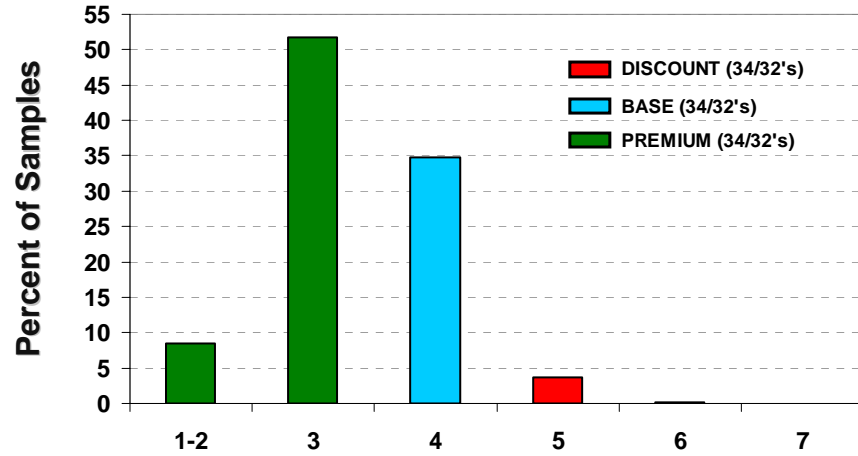
## COLOR GRADE DISTRIBUTION



## WHITE GRADES BY CLASSING OFFICE



## LEAF GRADE DISTRIBUTION



## COLOR & LEAF GRADE DISTRIBUTION

