

Cotton variety CLRDV evaluations

KATHY LAWRENCE, DREW SCHRIMSHER, BISHO LAWAJU, MARINA RONDON, WILL
GROOVER, DAVID DYER,

AUBURN UNIVERSITY, AUBURN, AL,

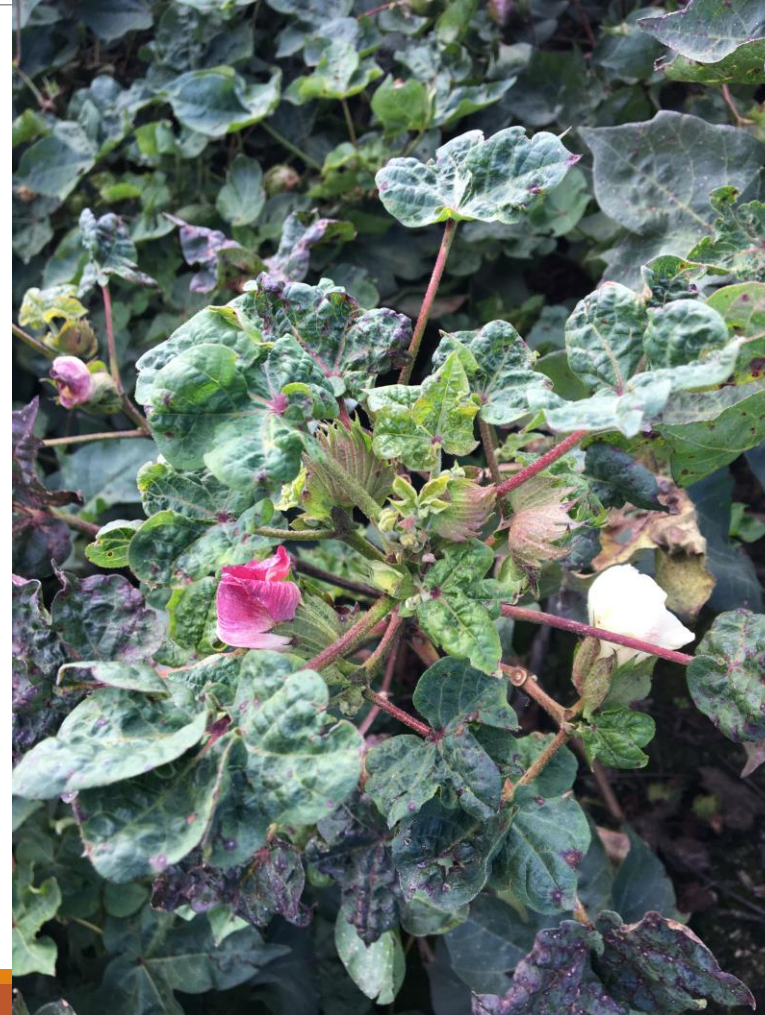


Cotton virus symptoms

AUGUST 29, 2017



SEPTEMBER 25, 2017



Cotton virus symptoms, 2018

August 24, 2018



September 2018



Cotton virus symptoms vs healthy plant, Sept. & Oct. 2019

Healthy

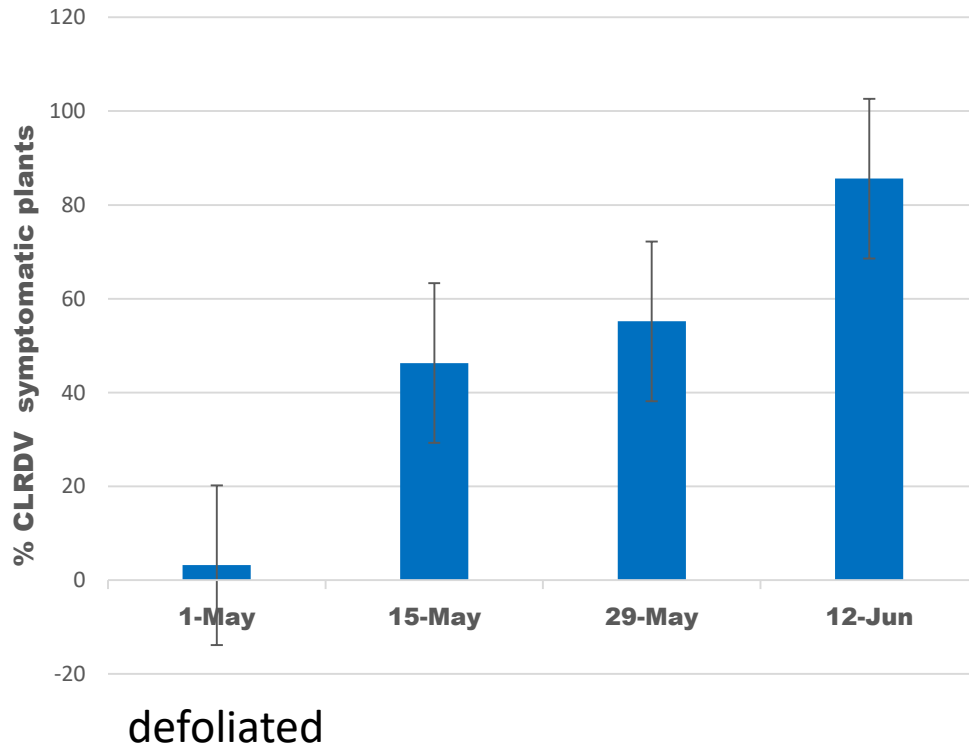


Symptomatic

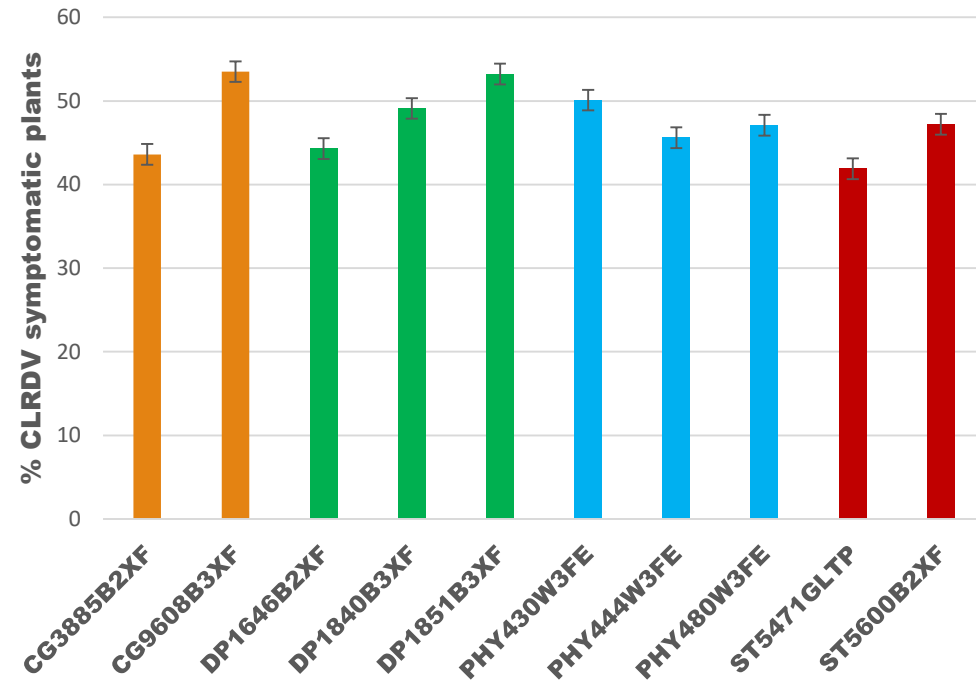


Cotton variety response to CLRDV by planting date, 2019

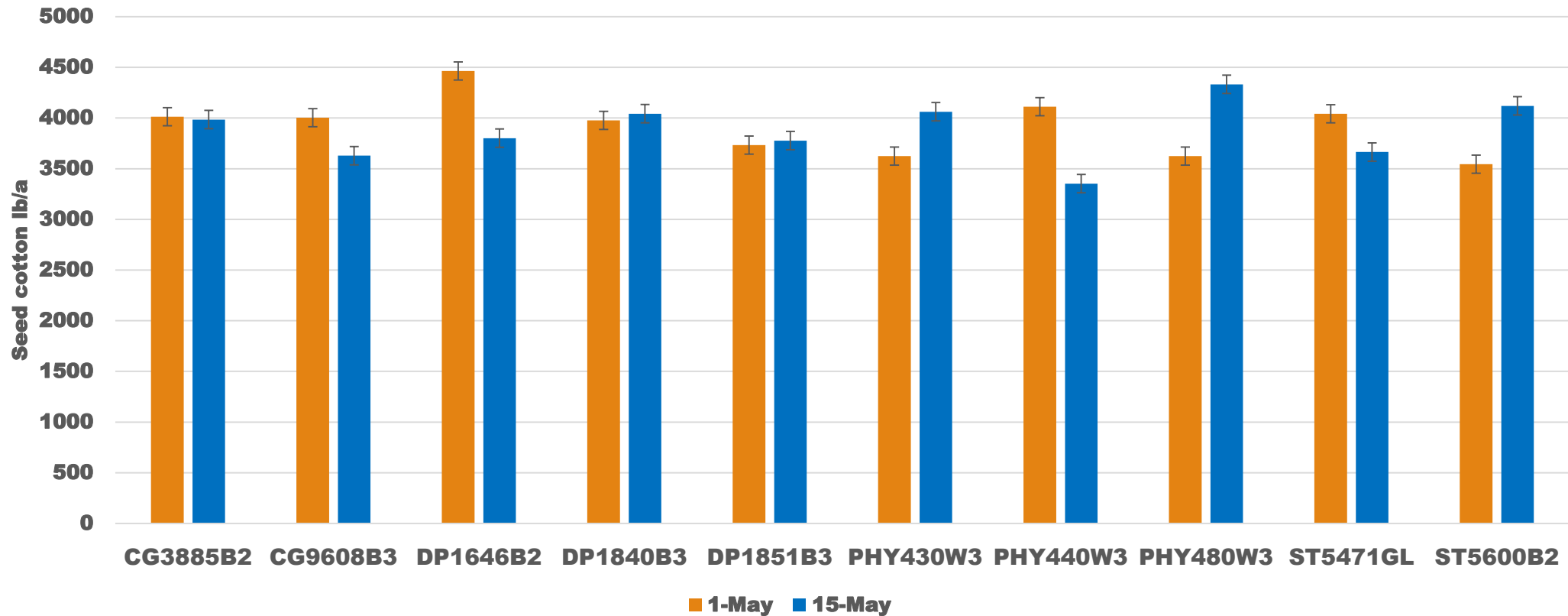
% CLRDV incidence across varieties by planting date, 2019



% CLRDV incidence by cotton variety, 2019

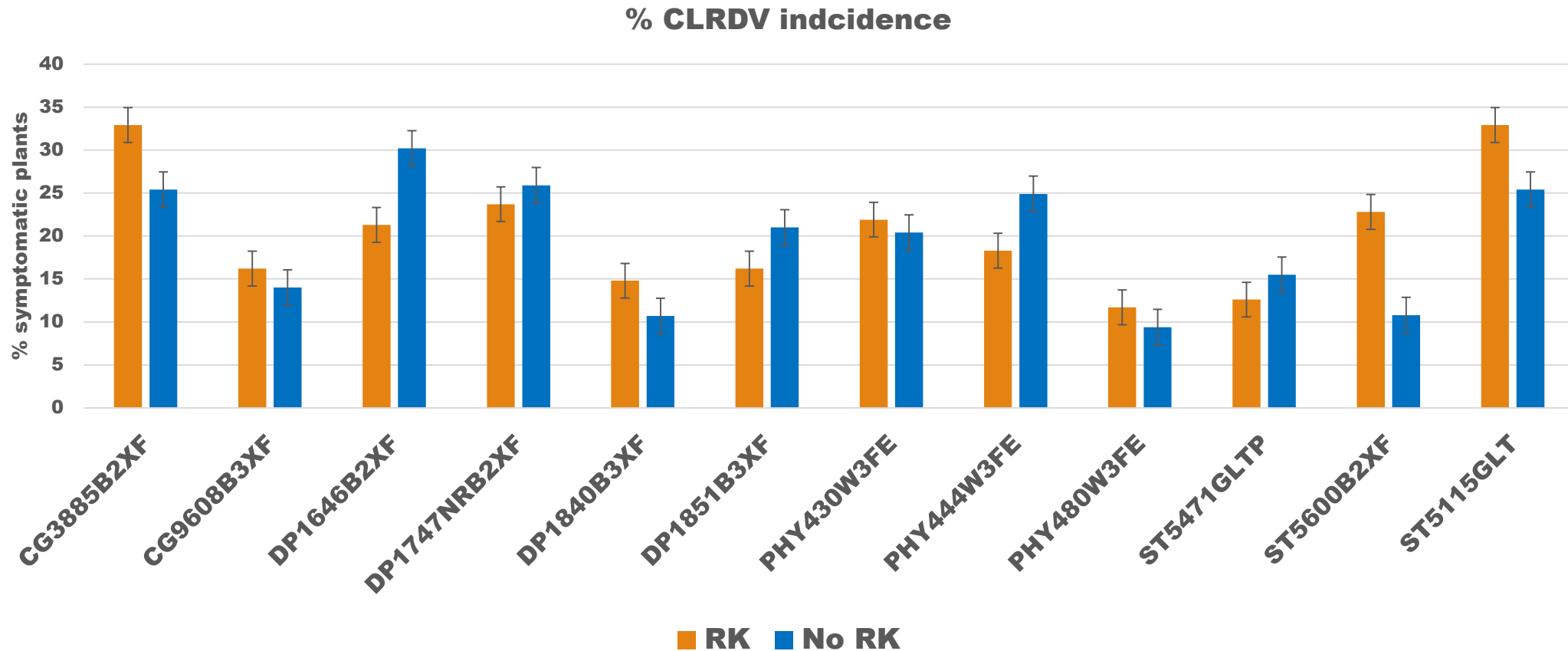


CLRDV cotton variety yield response to planting date, 2019

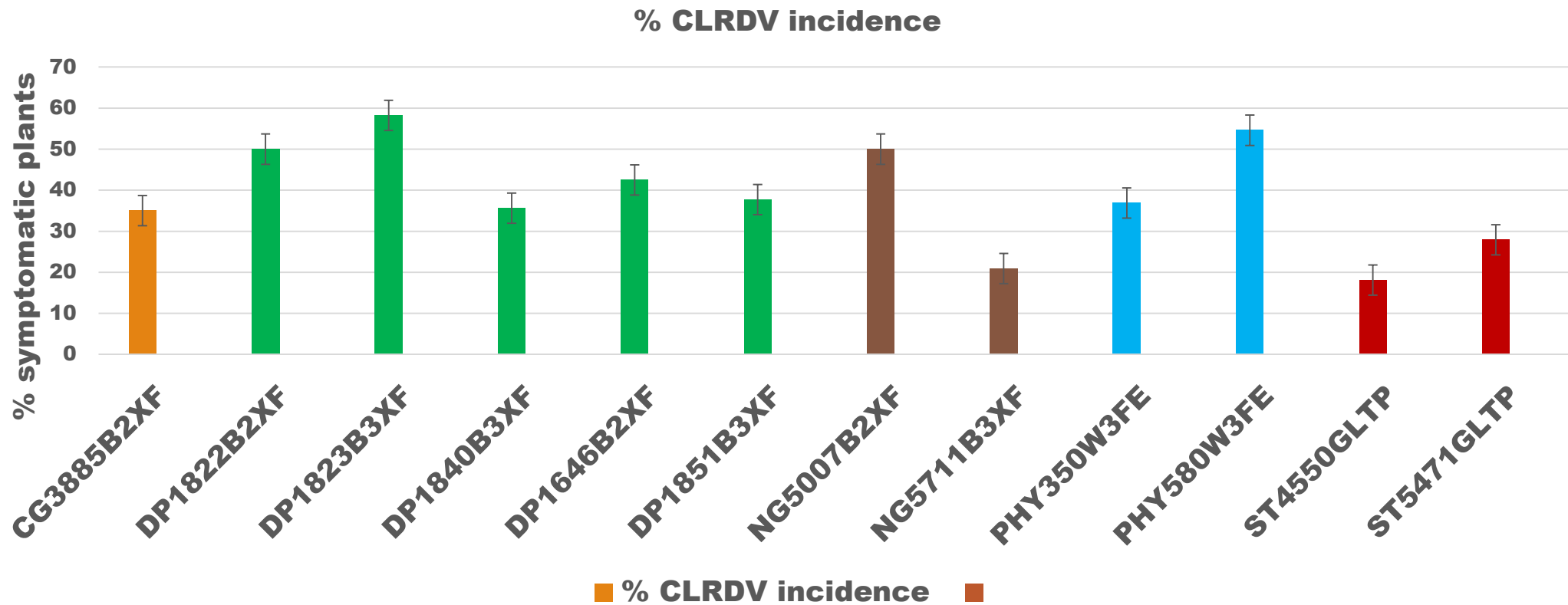


2.8 – 3.7 bales per acre

Cotton variety response to CLRDV as influenced by Root-knot nematode GCREC, 2019



Cotton variety response to CLRDV Jay FL, 2019



Cotton virus symptoms

Rating scale 1-5

2 LEAF FOLDING



3 LEAF CRINKLING



Cotton virus symptoms

4 LEAF DISTORTION

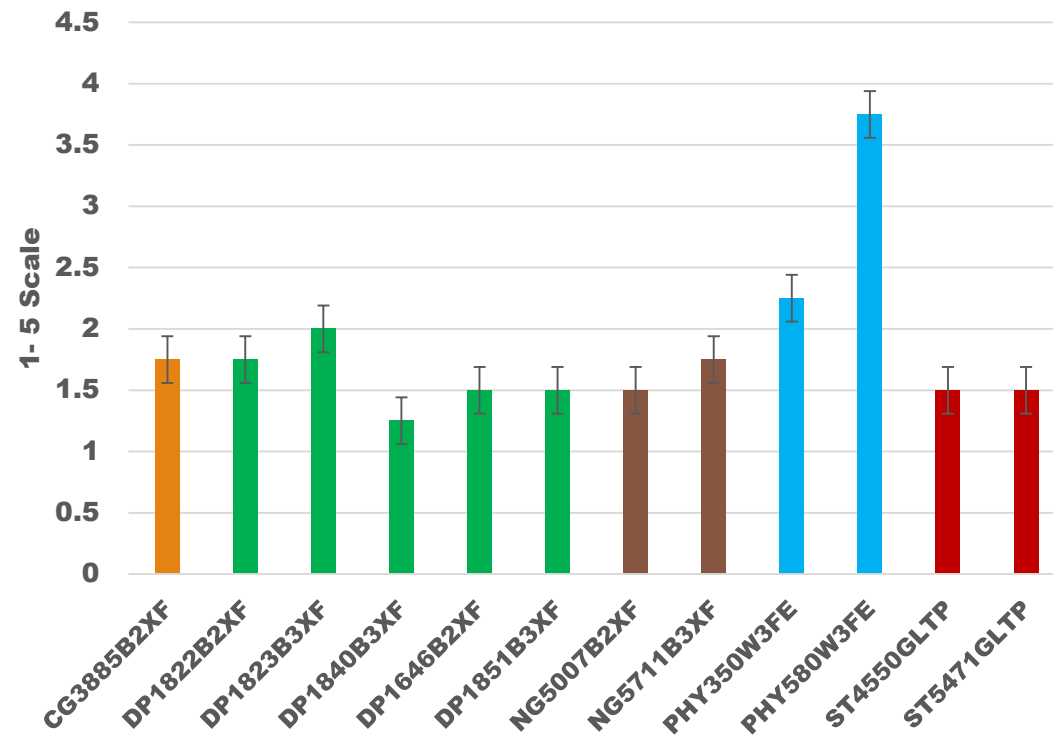


5 SEVERE DISTORTION AND DWARFING

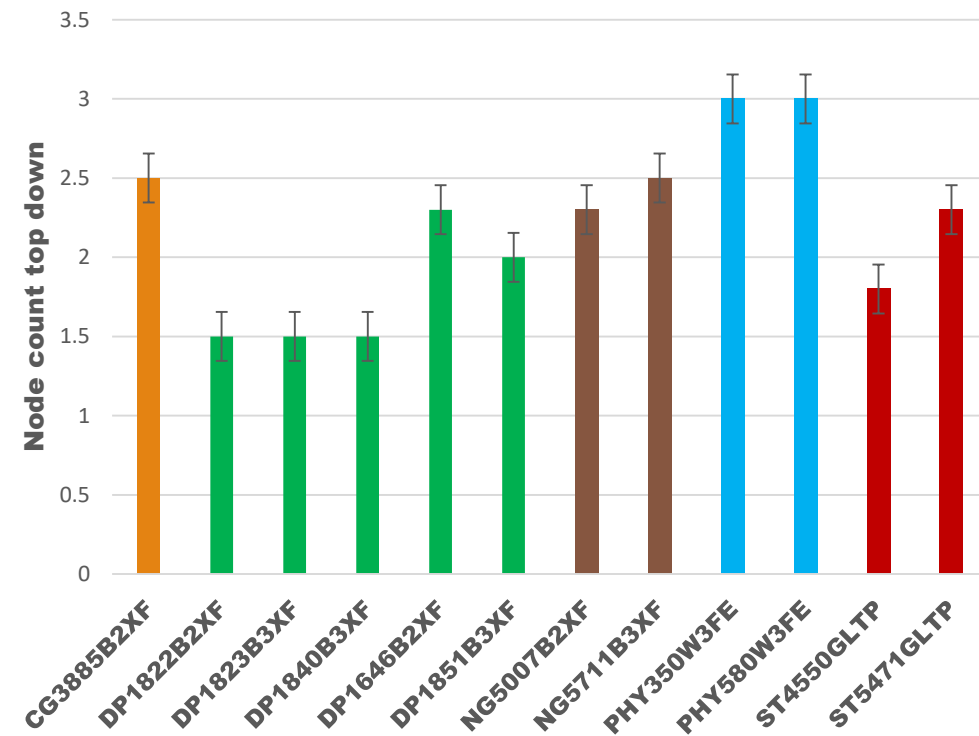


Cotton variety response to CLRDV Jay FL, 2019

CLRDV disease severity



Nodes with foliar symptoms



Cotton Blue
Disease
*Cotton leafroll
dwarf like virus
(CLRDV)*

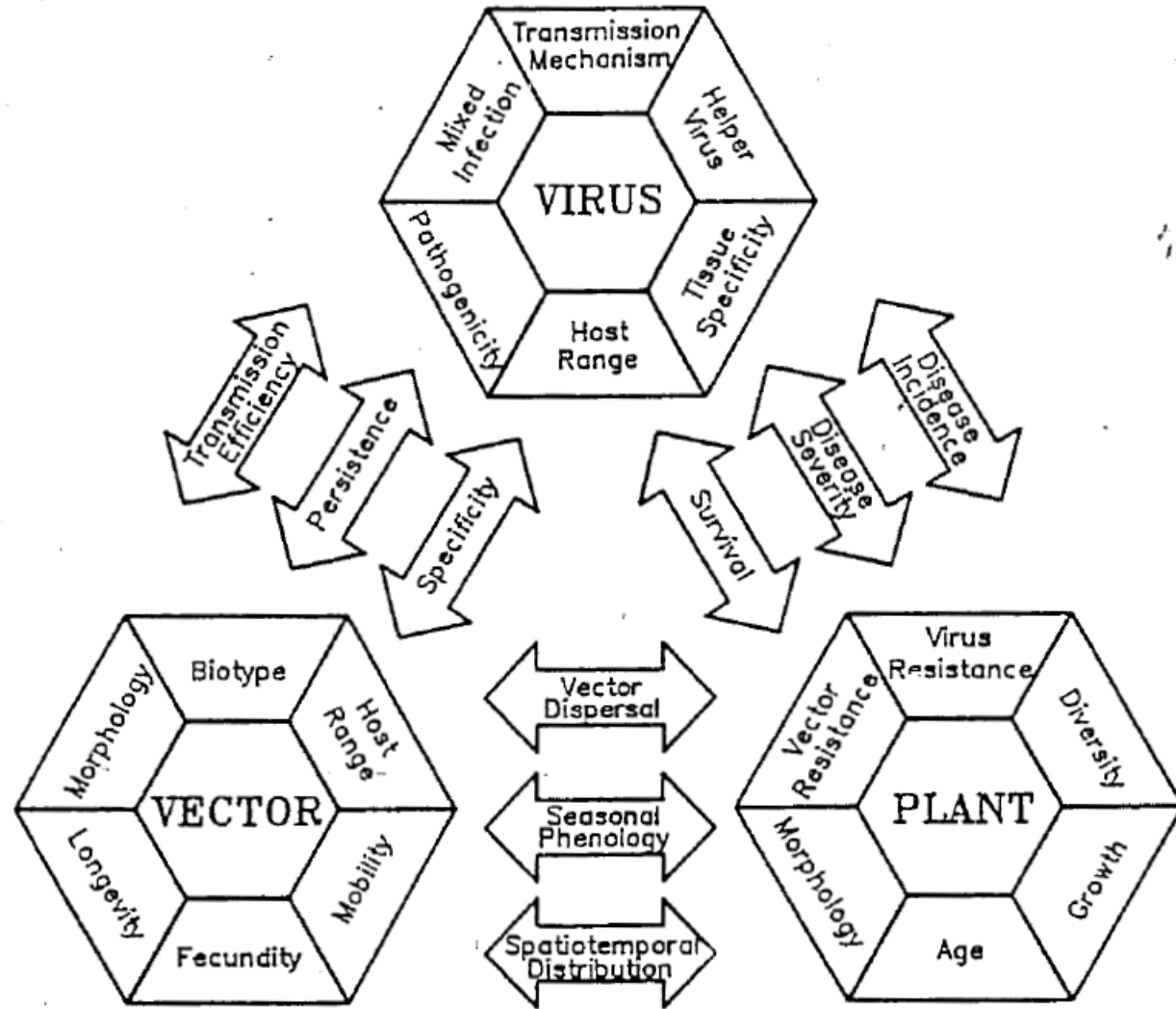


FIGURE 1. A conceptual, holistic ecological model of the intrinsic and interactive properties affecting the epidemiology of a vector-borne plant virus.

Cotton virus symptoms vs healthy plant

