

# **Glyphosate-Resistant Palmer Amaranth in Georgia**





**WeatherMax 22 oz, 2 d after application to 16 inch Palmer**

# Grower Complaint Fall of 2004





**WeatherMax 33 oz/A**



**WeatherMax 66 oz/A**



**WeatherMax 132 oz/A**



**WeatherMax 198 oz/A**



**WeatherMax 264 oz/A**



# Field Experiment 2: Materials and Methods

## Application Timings

---

EPOST: 0.5" Palmer

MPOST: 3" Palmer

LPD: 10" Palmer



0.5" at application



3" at application

Non-treated Control



WMax 22 oz EPOST, 0.5"

WMax 22 oz MPOST, 3"

WMax 22 oz LPD, 10"



WMax 44 oz EPOST, 0.5"

WMax 44 oz MPOST, 3"

WMax 44 oz LPD, 10"



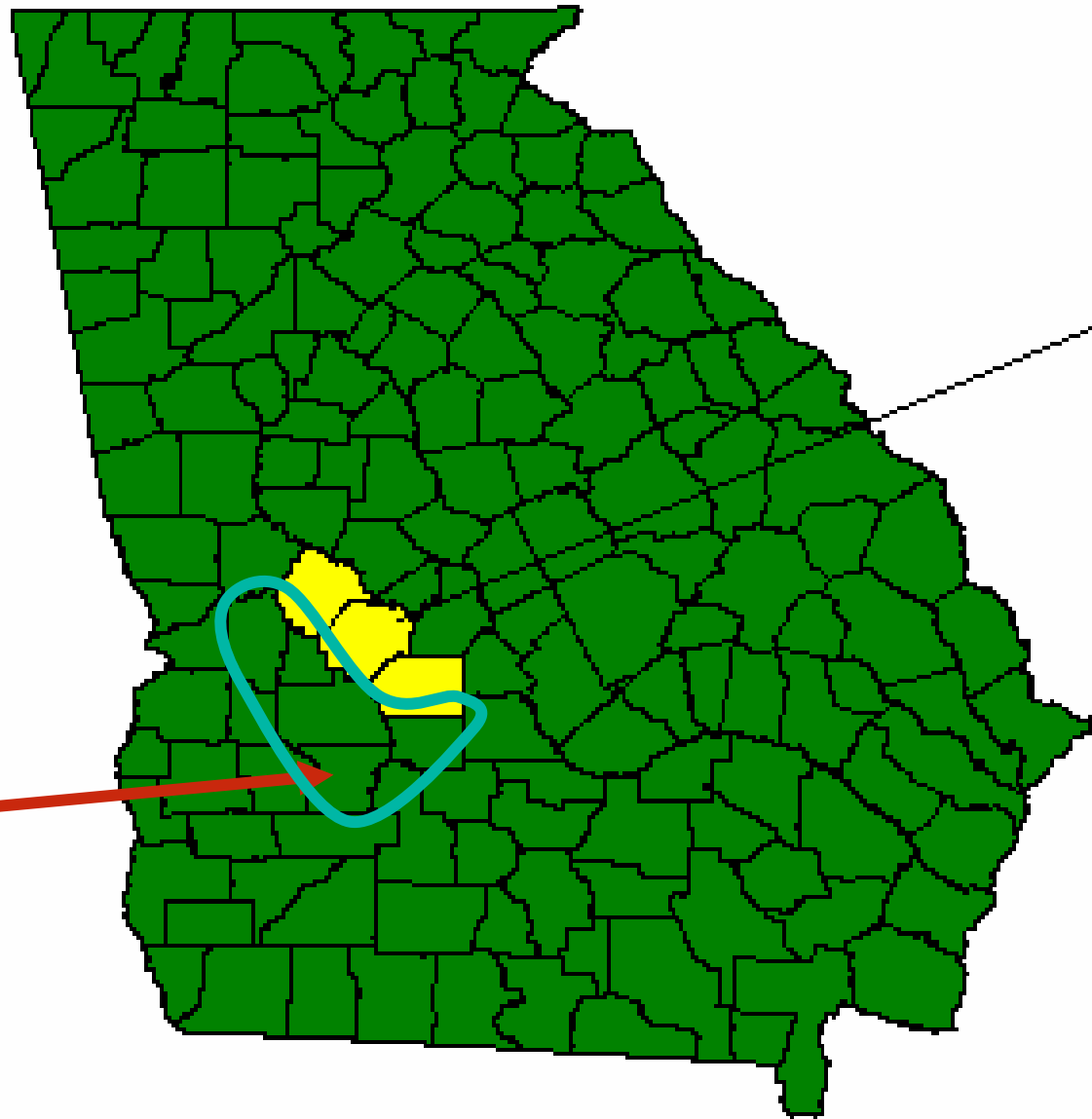
WMax 88 oz EPOST, 0.5"

WMax 88 oz MPOST, 3"

WMax 88 oz LPD, 10"







Confirmed  
Summer of  
2006



WeatherMax 88 oz at 1 inch

WeatherMax 88 oz at 4 inch

WeatherMax 88 oz PDIR





Prowl H2O 1.75 pt PRE

WeatherMax 22 oz + Dual Mag. 1 pt at 4 inch

WeatherMax 22 oz + Direx 1.5 pt PDIR



Prowl H2O 1.75 pt + Cotoran 1 qt PRE

WeatherMax 22 oz + Dual Mag. 1 pt at 4 inch

WeatherMax 22 oz + Direx 1.5 pt PDIR



Prowl H2O 1.75 pt + Reflex 1 pt PRE

WeatherMax 22 oz at 4 inch

WeatherMax 22 oz + Direx 1.5 pt PDIR



Prowl H2O 1.75 pt + Reflex 1 pt PRE

WeatherMax 22 oz + Dual Mag 18 DAP before Pigweed emergence

WeatherMax 22 oz + Direx 1.5 pt PDIR



Prowl H2O 1.75 pt + Reflex 1 pt PRE

WeatherMax 22 oz + Dual Mag 24 DAP with ½" Palmer

WeatherMax 22 oz + Direx 1.5 pt PDIR



**Prowl + Reflex PRE**  
**Roundup + Staple 3 inch**  
**Direx + MSMA PD**



Prowl H20 1.75 pt + Reflex 1 pt PRE  
WeatherMax 22 oz + Staple at 3 inch  
WeatherMax 22 oz + Direx 1.5 pt PDIR

WMax 22 oz + Staple LX 1.7 oz; Palmer 0.5" when treated





WMax 22 oz + Staple LX 2.55 oz; Palmer 0.5 " when treated



Prowl PRE, Roundup POST Twice



Prowl PRE, Ignite POST Twice





**Ignite (22 oz) at 2 inch  
Ignite (22 oz) at 2 inch  
Direx + MSMA PD**



**Ignite (22 oz) at 5 inch  
Ignite (22 oz) at 5 inch  
Direx + MSMA PD**



**Prowl + Reflex PRE  
Ignite (22 oz) at 2 inch  
Direx + MSMA PD**

**Large Plot**



**Prowl + Reflex PRE**  
**Roundup + Dual Magnum**  
**Roundup**  
**Direx + MSMA**



**Prowl + Reflex PRE**

**Roundup + Dual Magnum**

**Roundup**

**Direx + MSMA**



**Atrazine PRE**  
**Roundup + Atrazine POST**

**Ten weeks after corn harvest**







THANK YOU  
FOR RETURNING OUR  
EQUIPMENT CLEAN





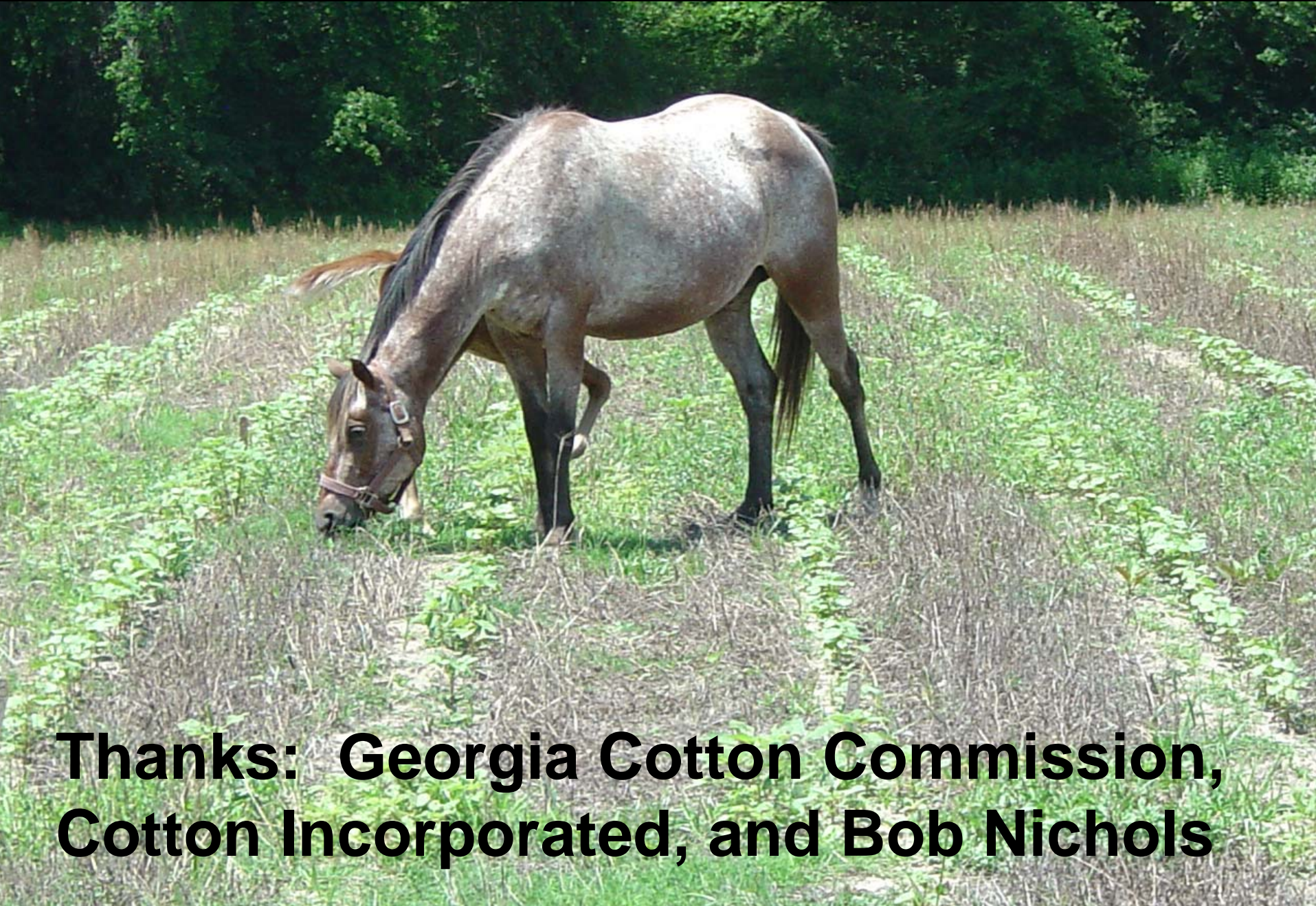


# Glyphosate-resistant Palmer Amaranth Infesting RR Cotton





# Questions



**Thanks: Georgia Cotton Commission,  
Cotton Incorporated, and Bob Nichols**