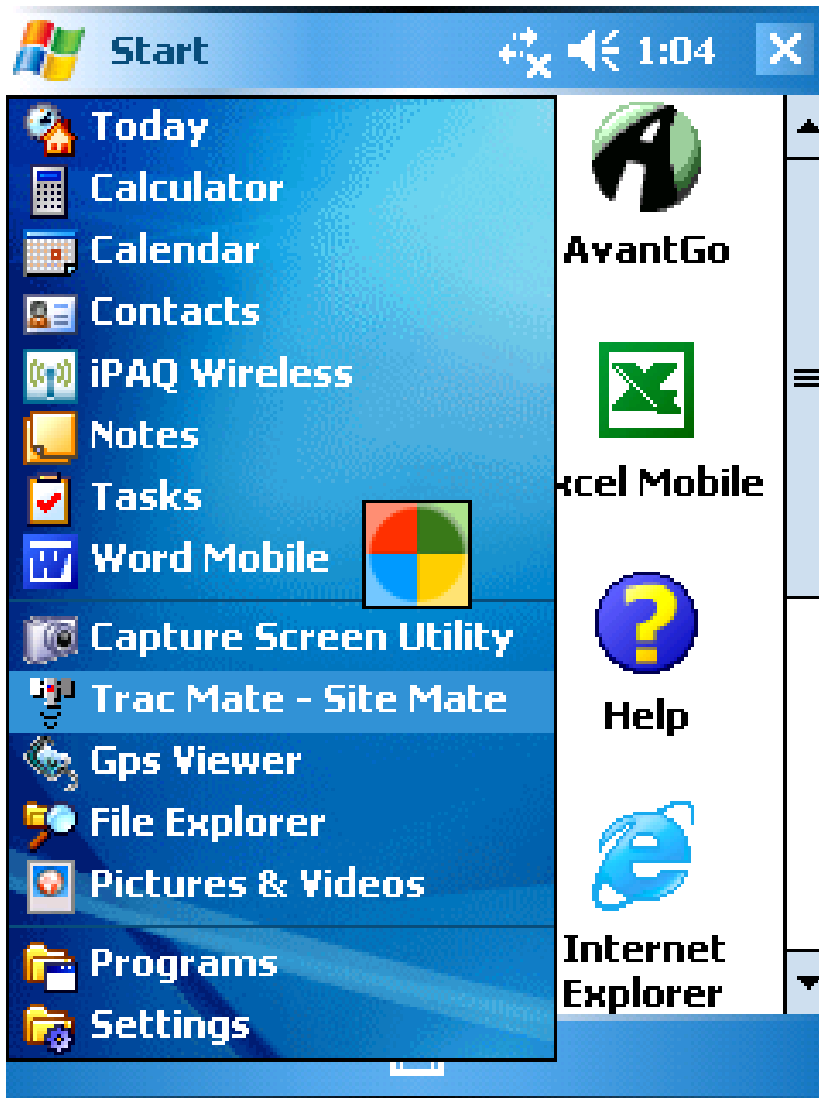


# Zone Sampling Exercise Using Site Mate

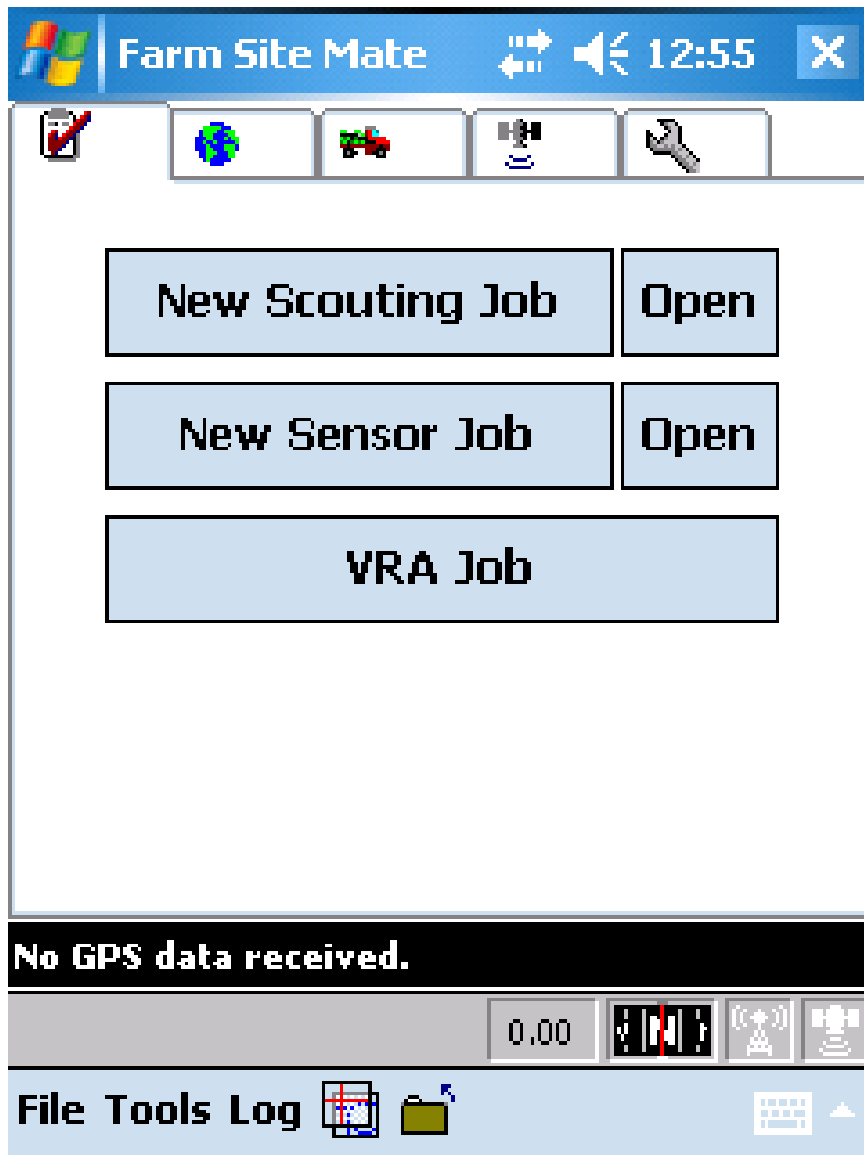
Precision Cotton Workshop  
November 13, 2008

Amy Thompson Winstead  
Regional Extension Agent, Precision Agriculture  
Alabama Cooperative Extension System

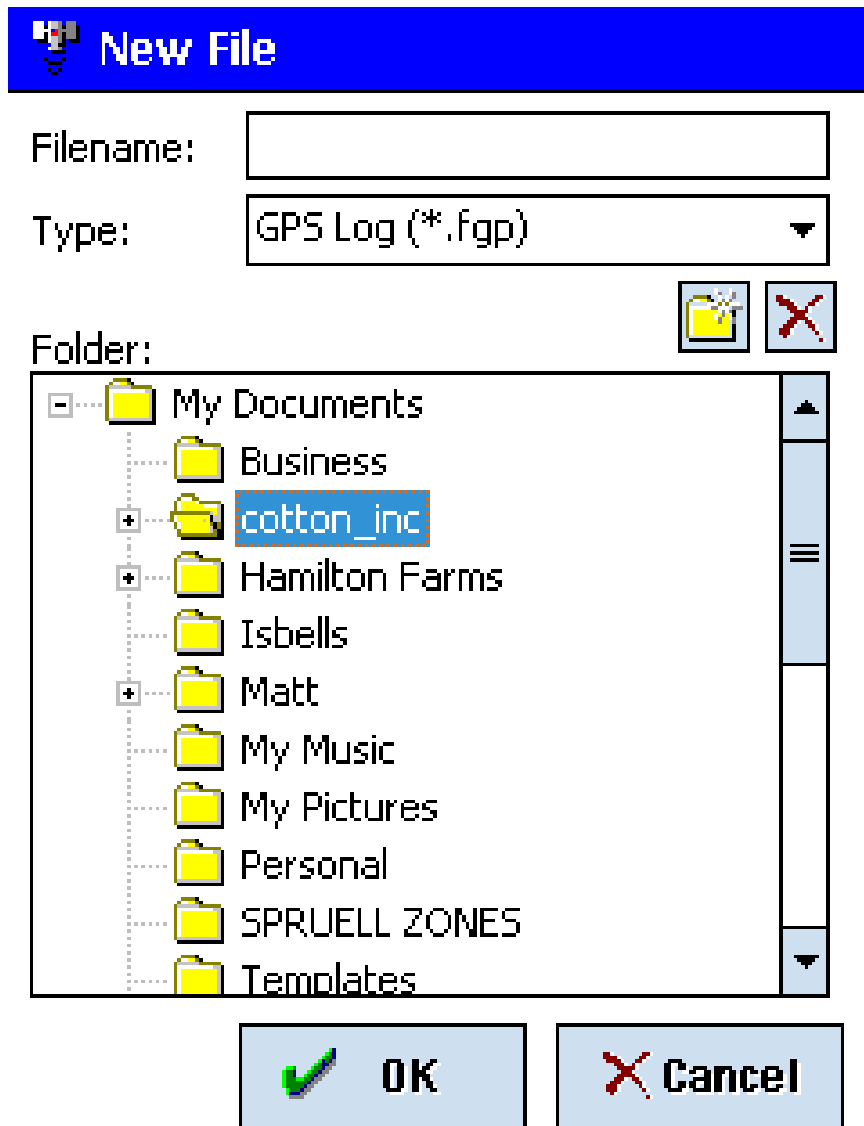




1. Open Site Mate by clicking on the iPAQ's Start button and selecting Trac Mate - Site Mate from the drop down menu. (You can also select 'Programs' from the Start Menu and then select Trac Mate - Site Mate).





2. From the main page, select New Scouting Job



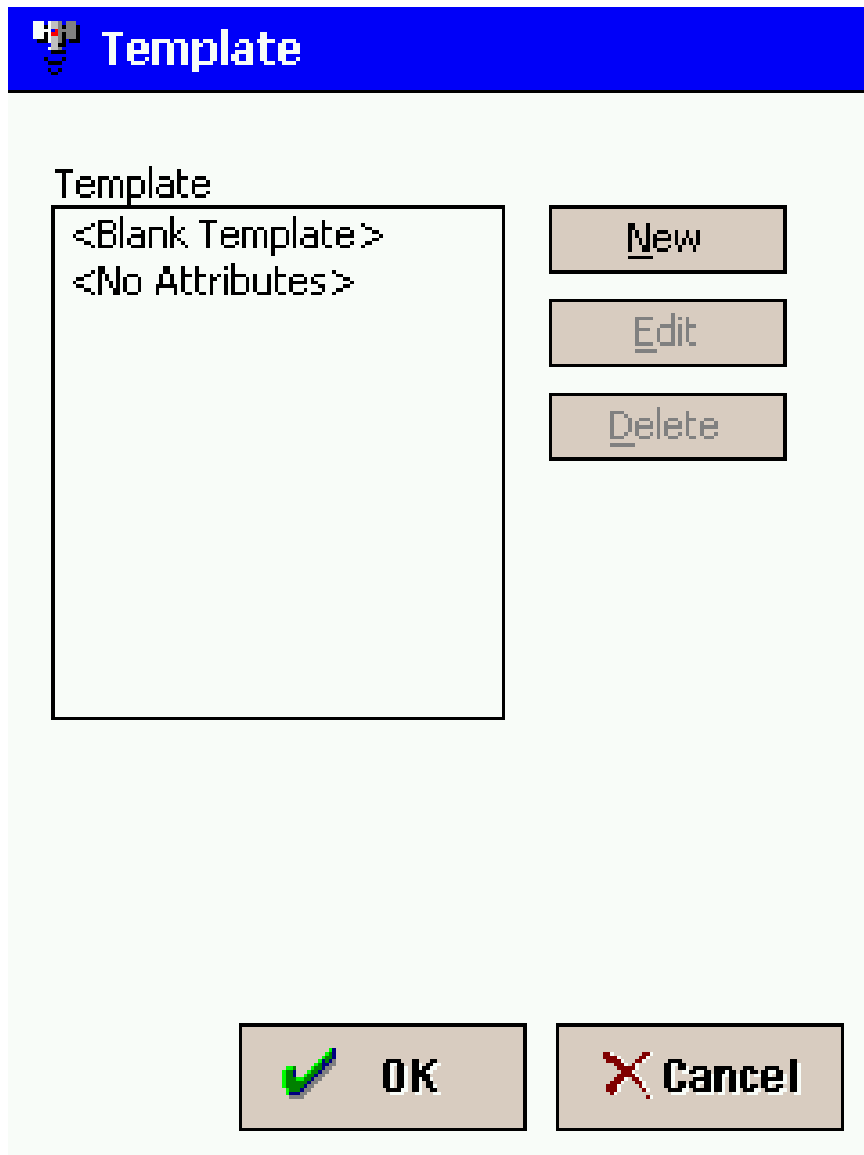
3. Under Folder open 'My Documents' by selecting the '+' sign on the left hand side. Select the folder labeled Cotton\_inc.

## Filename:

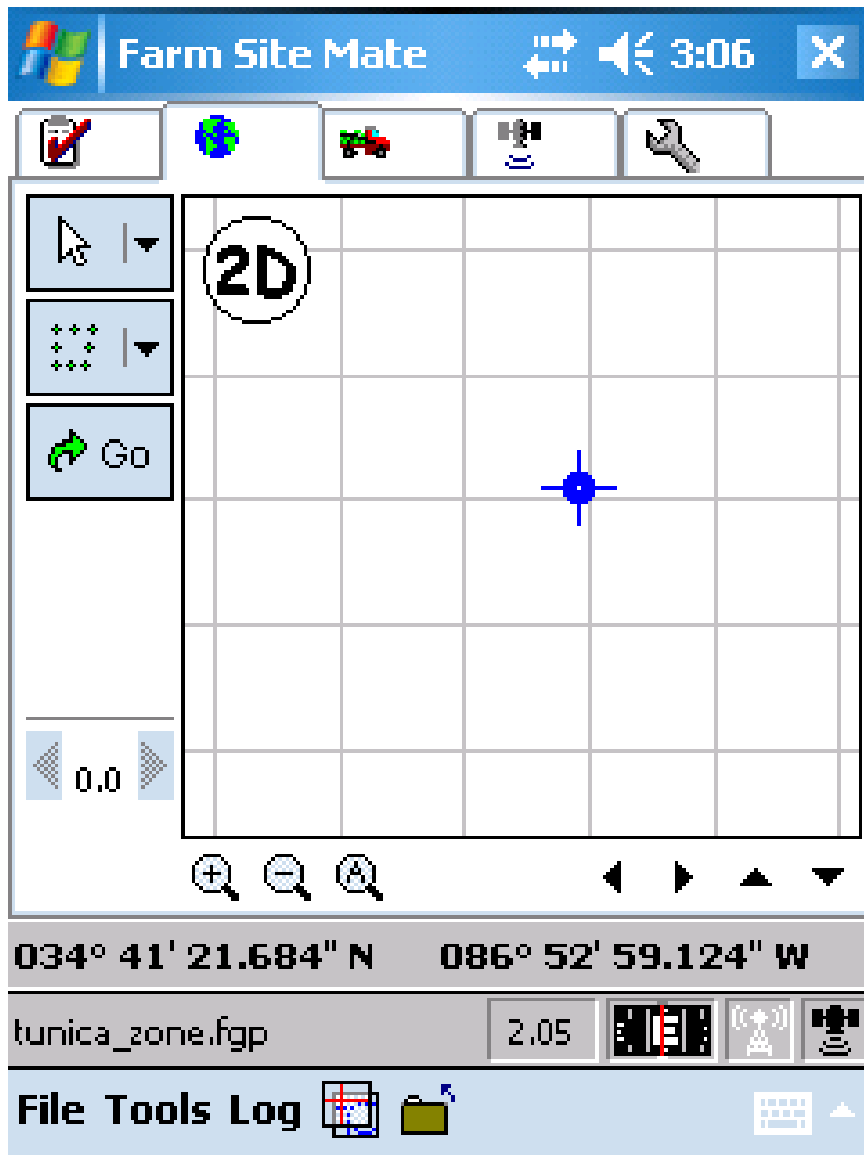
tunica_zone	OK	
-------------	----	---

<b>a</b>	<b>b</b>	<b>c</b>	<b>d</b>	<b>e</b>	<b>f</b>
<b>g</b>	<b>h</b>	<b>i</b>	<b>j</b>	<b>k</b>	<b>l</b>
<b>m</b>	<b>n</b>	<b>o</b>	<b>p</b>	<b>q</b>	<b>r</b>
<b>s</b>	<b>t</b>	<b>u</b>	<b>v</b>	<b>w</b>	<b>x</b>
<b>y</b>	<b>z</b>	<b>1</b>	<b>2</b>	<b>3</b>	<b>4</b>
<b>5</b>	<b>6</b>	<b>7</b>	<b>8</b>	<b>9</b>	<b>0</b>
<b>áü</b>	<b>!@#</b>	<b>123</b>	 Shift	<b>Spc</b>	 Bksp

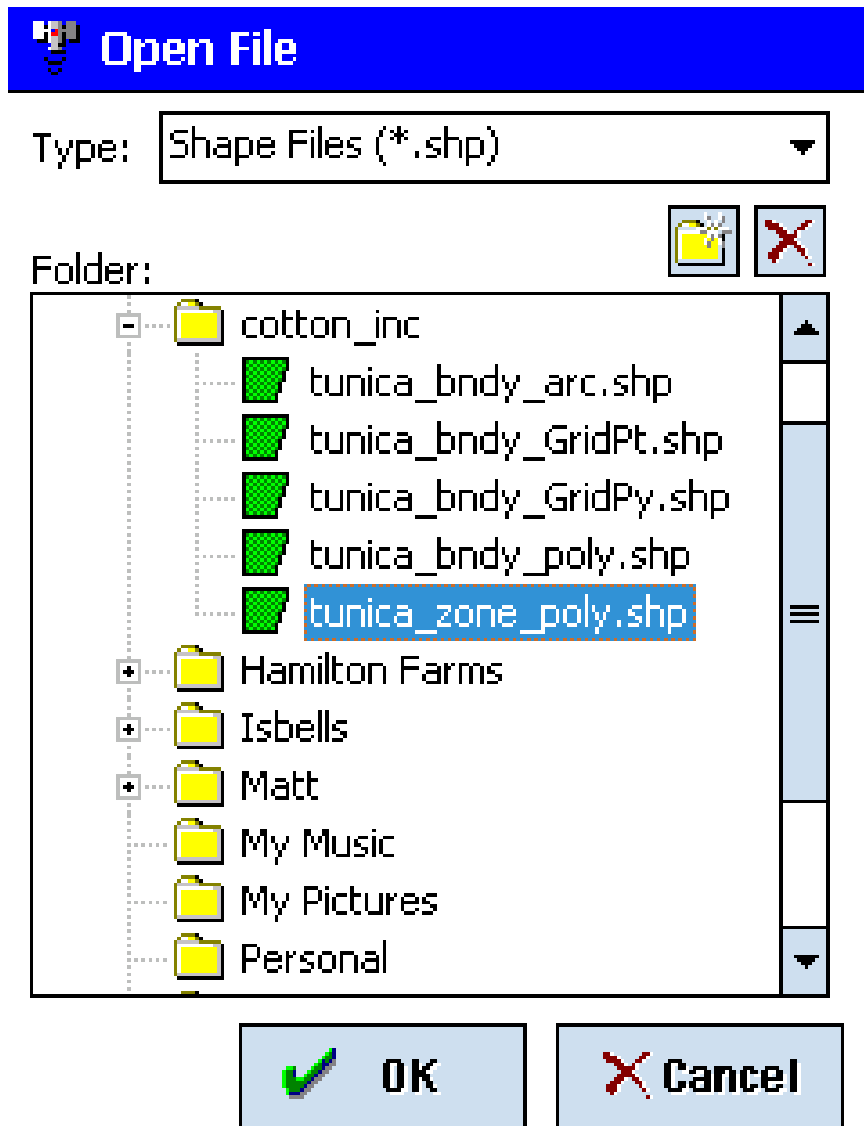
4. Once the cotton\_inc folder is highlighted, select the box next to Filename and using the pop-up alphabet name your file 'tunica\_zone' (the underscore is found by selecting the symbols icon at the bottom of the alphabet page). Click **OK** when finished.



5. Click **OK** on the Template page



6. You are now on the scouting job page. Click on the File tab at the bottom of the page and select Layers



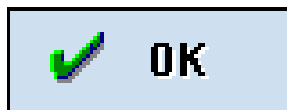
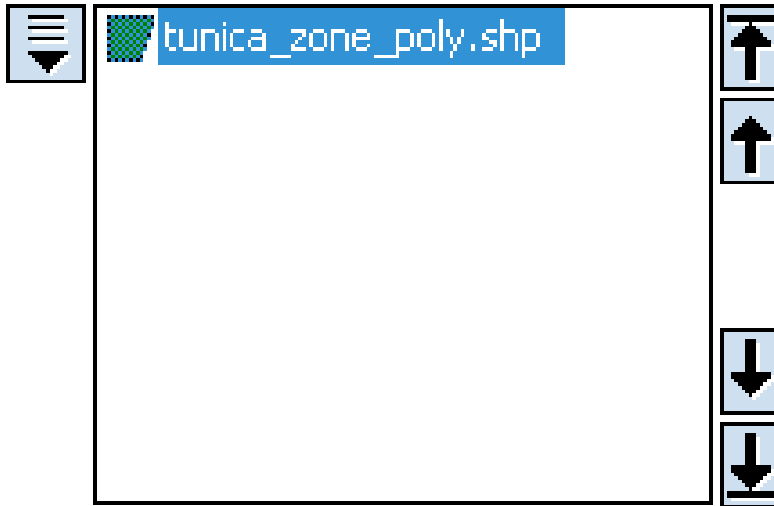
7. Select the file tunica\_zone\_poly.shp. (Make sure the file type is selected to Shape Files \*.shp). Click **OK**.





## Background Layers

Background



8. Click on the arrow on the left side of the page and select “Label”.



## Text

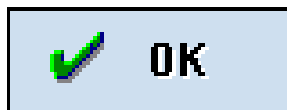
Text Display

Attributes

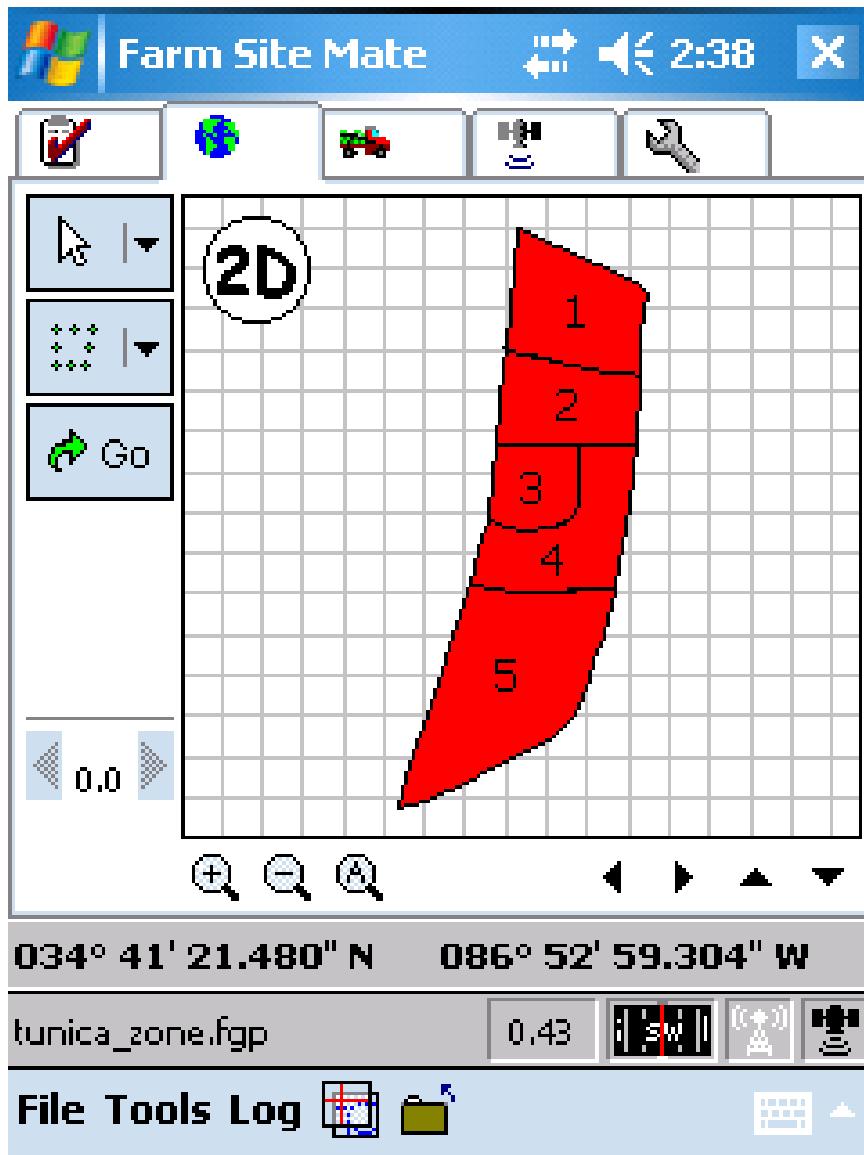
Area	▲
Length	
Field	≡
Dataset	
Product	
Obj_Id	
Sample_ID	
Name	
Soil_ENR_I	
Soil_P1_pp	▼

Opaque

Transparent



9. From the drop down menu select Sample\_ID and select Transparent on the right hand side. Click **OK**. Click **OK** on the Background Layers page.



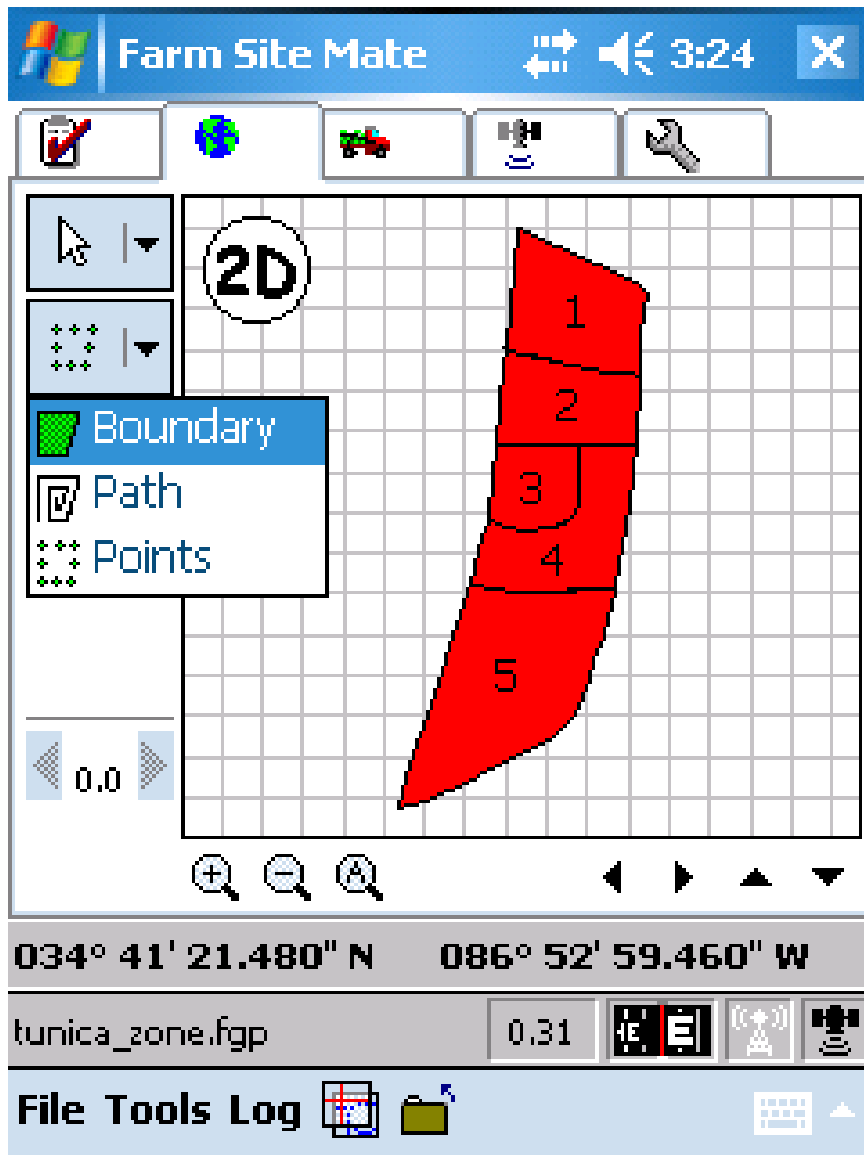
10. Touch the stylus on a zone and select Attributes to see the properties table for the zone.

## Properties

Area (calc)	0.50 ac	▲
Field		☰
Dataset		
Product		
Obj__Id	1.00	
Sample_ID	1	
Name		
Soil_ENR_I	0.00	▼



11. Features in the table can be edited by clicking in the box on the right.



12. Use the tools on the left to drop a point or create a boundary or path using your zone as the background.

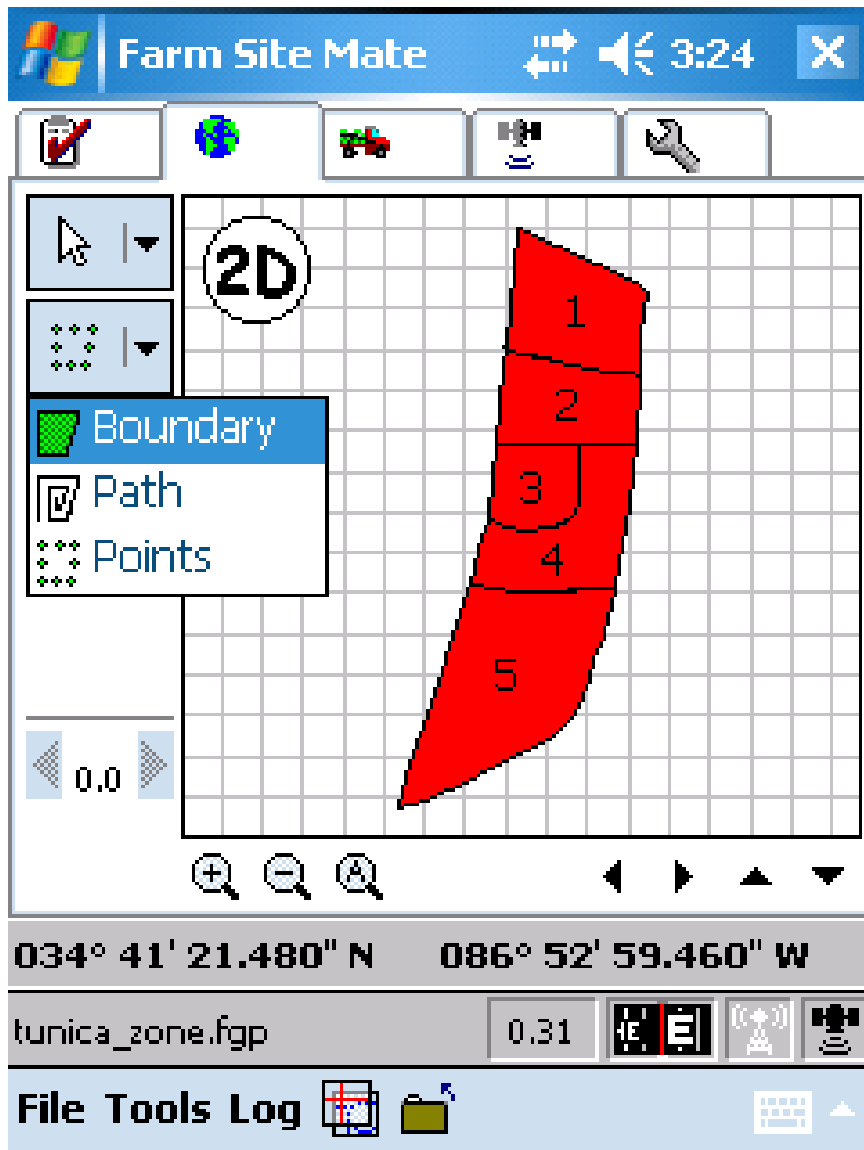
**STOP HERE TO TRANSITION  
OUTSIDE - DO NOT close  
file or shut down iPAQ**

# Navigation Exercise Using Site Mate

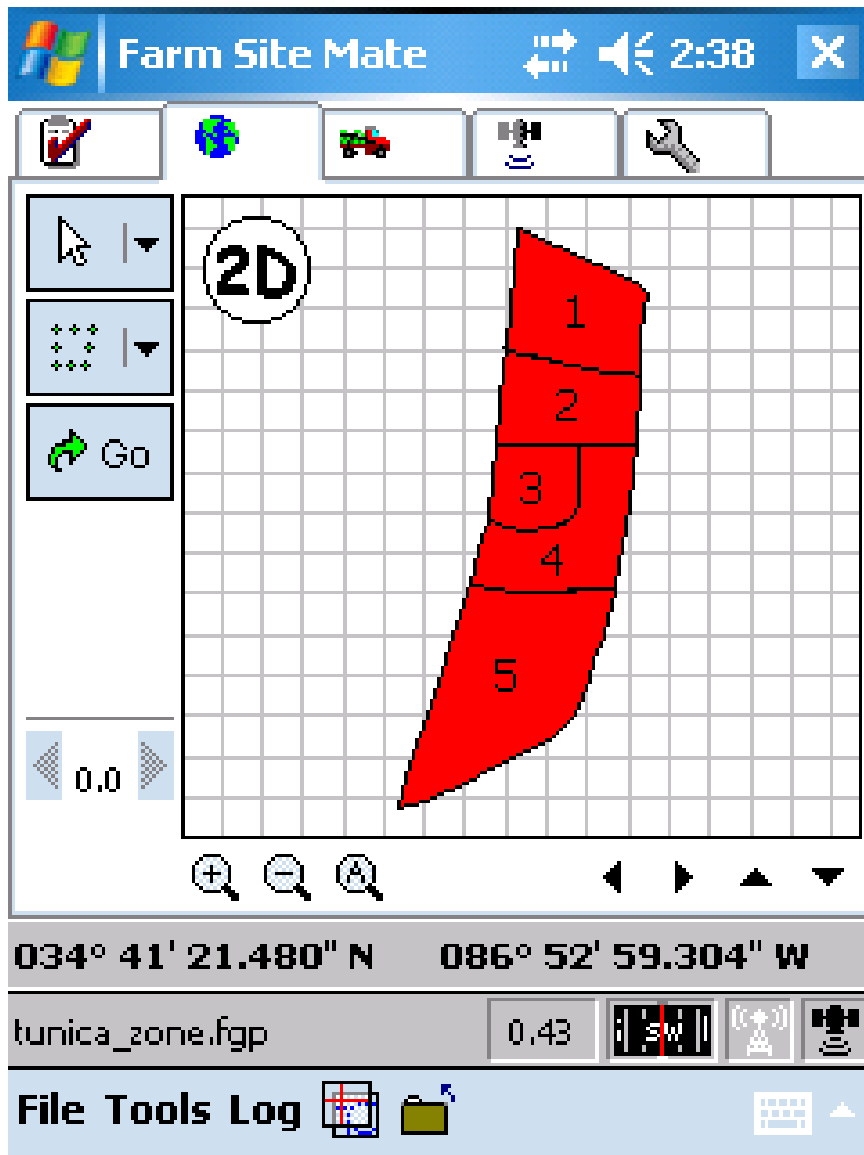
Precision Cotton Workshop  
November 13, 2008

Amy Thompson Winstead  
Regional Extension Agent, Precision Agriculture  
Alabama Cooperative Extension System



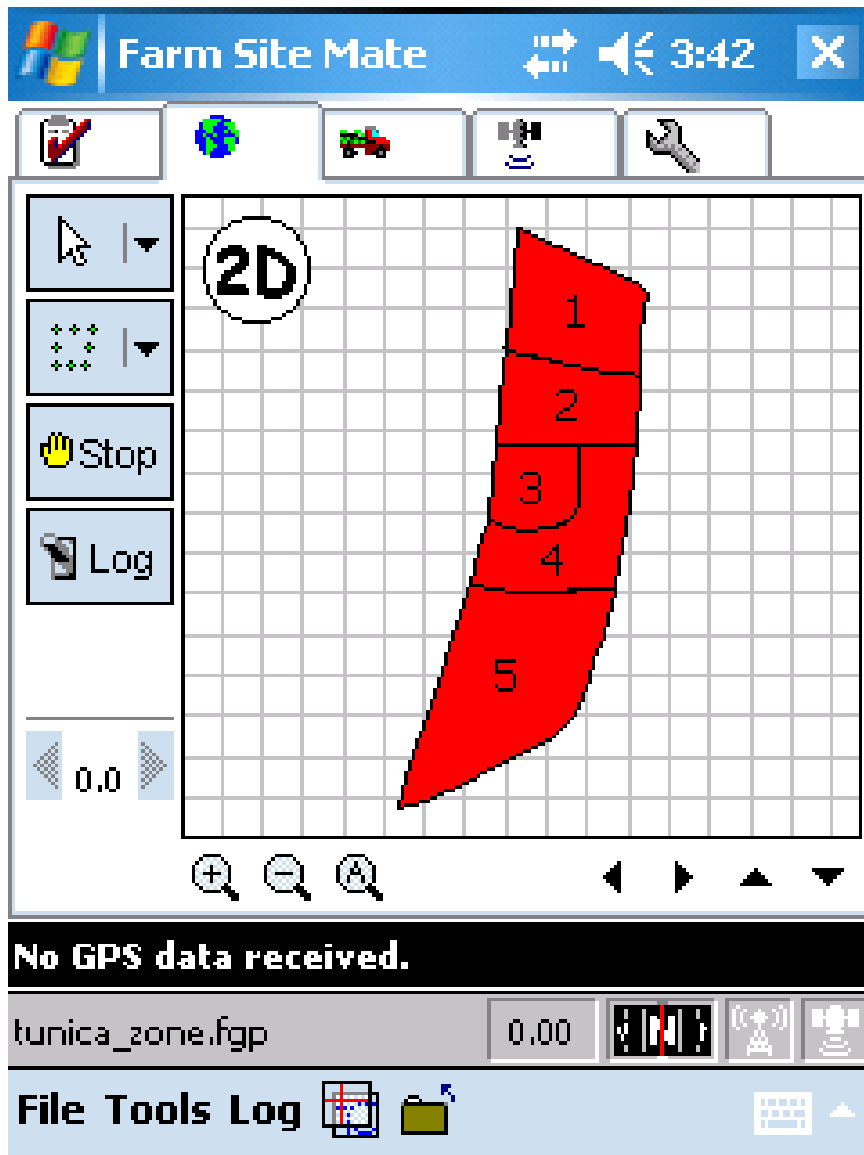


14. Use the second drop down arrow on the left and select Points.

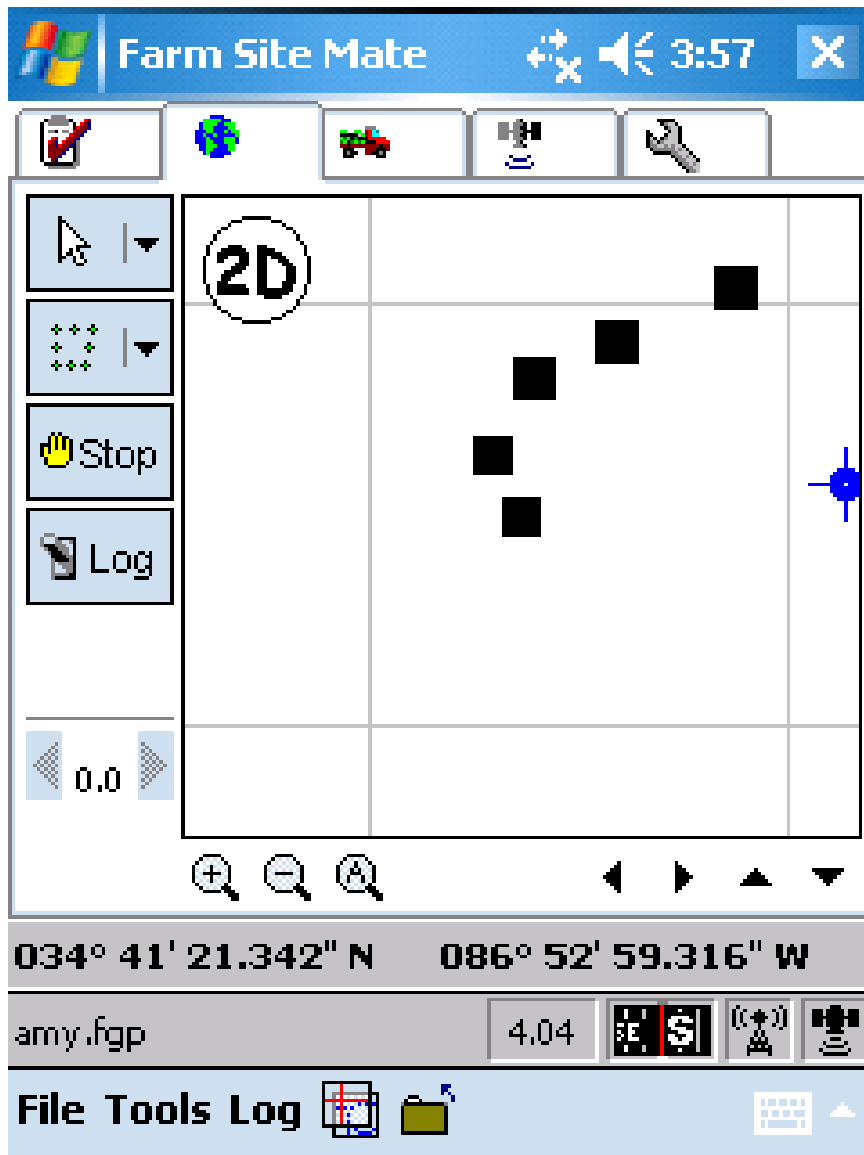


15. Select **'GO'**. The page now displays a Stop and Log button.



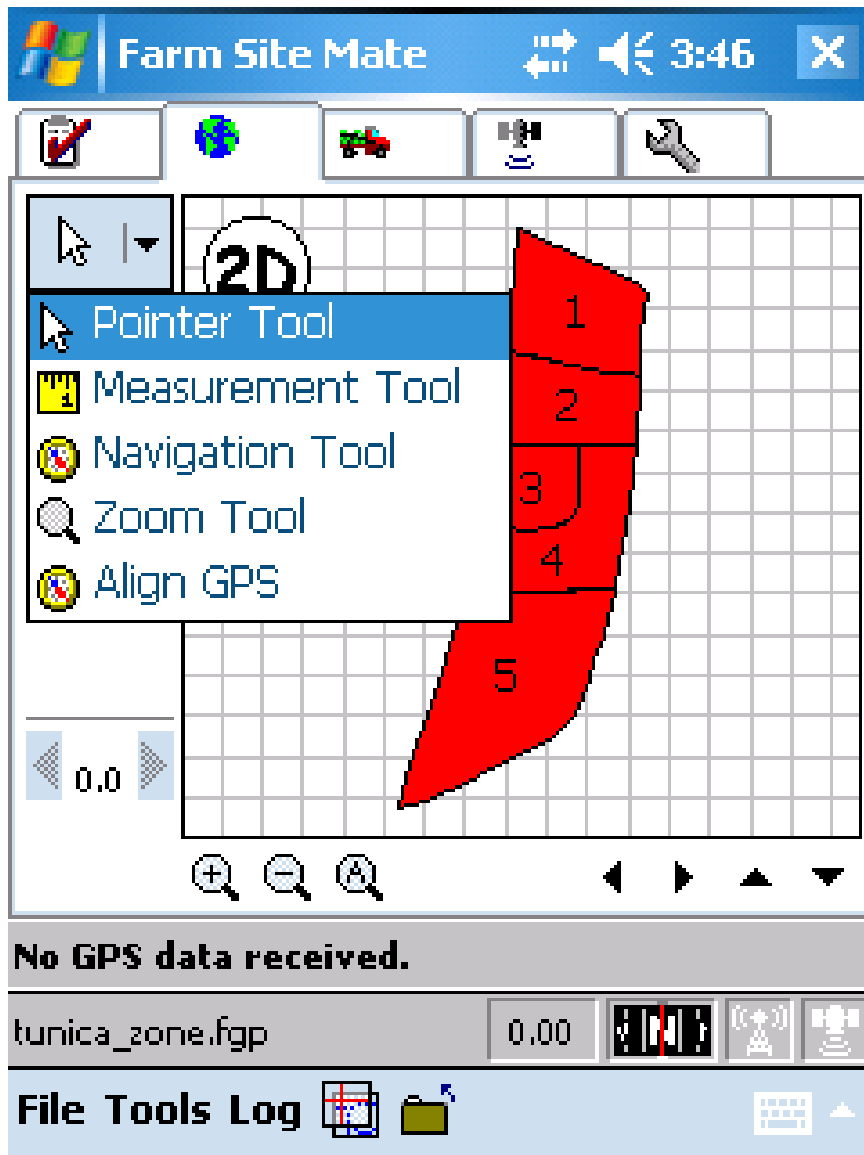


16. Click the Log button on the left hand side each time you want to mark a point.

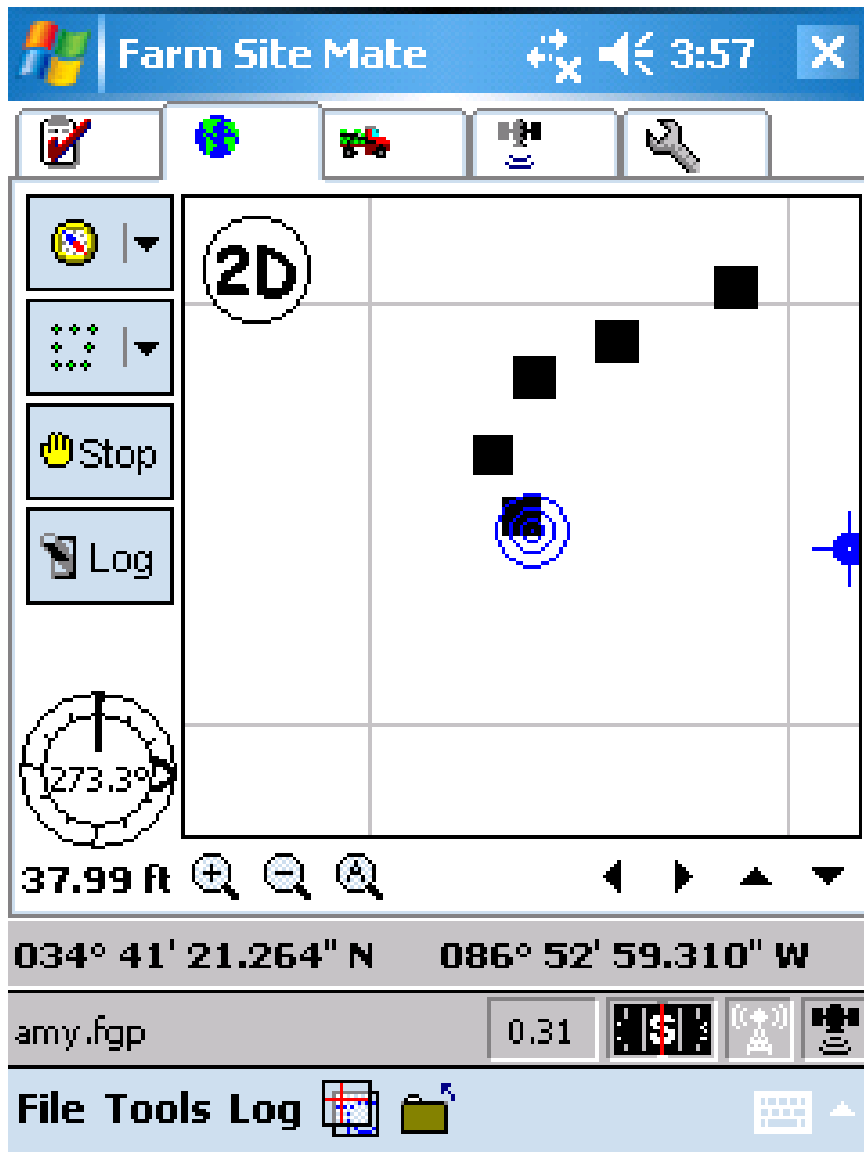


17. You should see the points appear on the screen as you log them. Mark a couple of points and return to the start of the exercise.

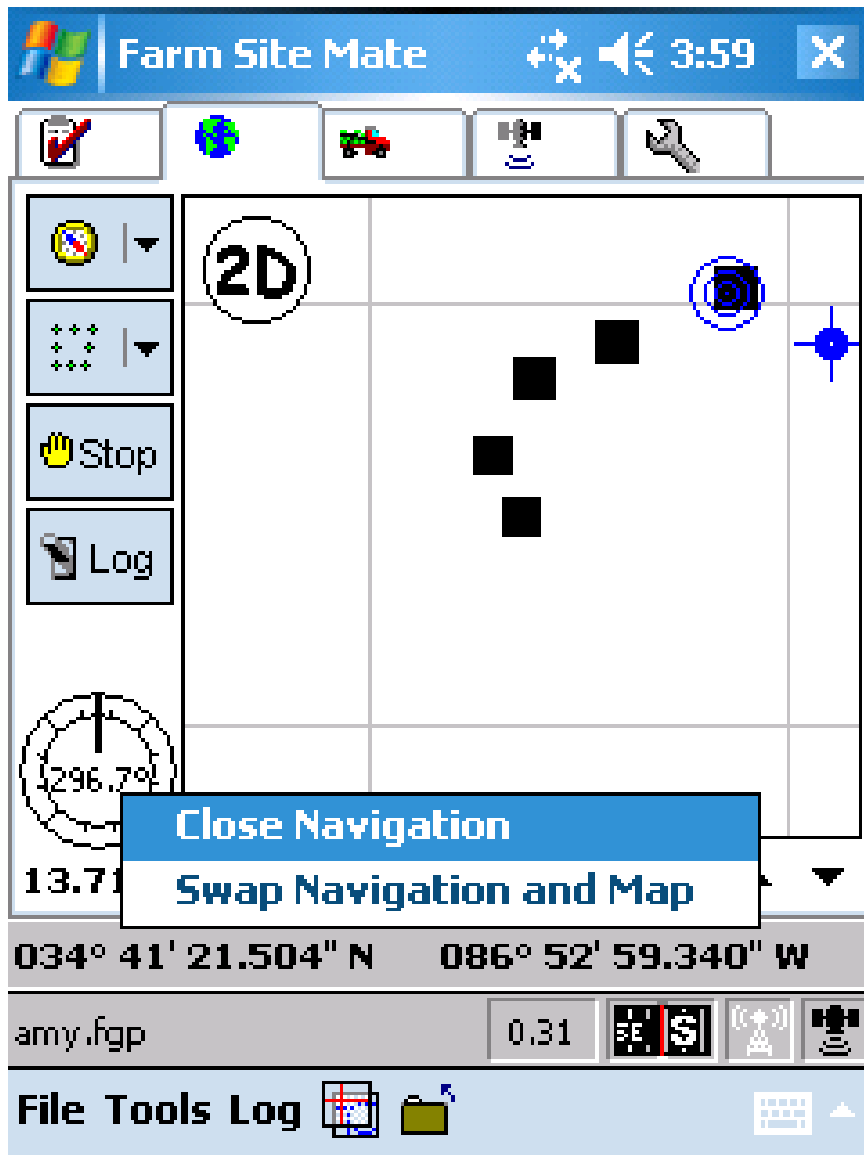
18. Upon returning to the beginning of the exercise, swap iPAQ units with another group.



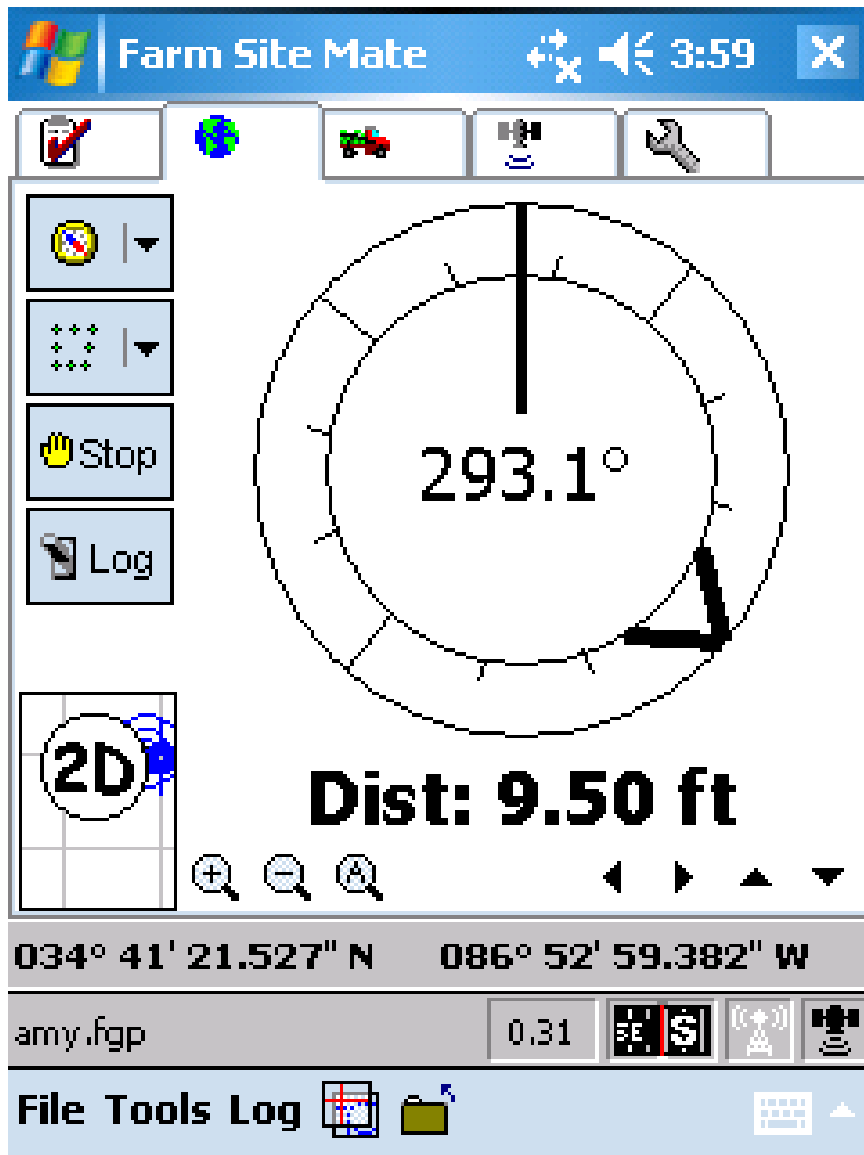
19. Select the drop down menu from the top left hand side and select the Navigation tool.



19. Click on a point and use the Navigation tool to locate the selected point. (The screen view is always oriented North)



20. You can toggle the map view and compass view by clicking on the compass and selecting Swap.



21. Repeat to swap back to map view.



## Export Log File?

Do you wish to export this log?

Yes

No

In the future...

ALWAYS export the log file.

NEVER export the log file.

ASK each time a log is saved.



OK



Cancel

22. When finished navigating select File – Close all. Select Yes to export the log file and keep Ask each time selected. Click **OK**.





## Export File

Export File Types



Arcview Shape File (.shp)



Mapinfo Interchange File (.mif)



Farm Works GPL File (.gpl)

\\My Documents\cotton\_inc



OK



Cancel

23. Select ArcView Shape File to Export and browse to save under \\My Documents\cotton\_inc. Click **OK**.



## Export File

Arcview Shape File (.shp)

Points



\My Documents\cotton\_inc\tunica\_zone\_pts

Paths



Boundaries



Export as lines



OK



Cancel

23. Select Points and Click **OK**